

Cottam Solar Project

Assessment of Landscape and Visual Significant Effects of Panel Types

Prepared by: Lanpro Services
November 2023

PINS reference: EN010133
Document reference: EX2/C8.2.8
Infrastructure Planning (Examination Procedure) Rules 2010



Contents

<u>1</u>	<u>INTRODUCTION</u>	<u>3</u>
<u>2</u>	<u>CONCLUSION</u>	<u>3</u>
<u>3</u>	<u>ASSESSMENT OF PANEL TYPES ON LANDSCAPE RECEPTORS</u>	<u>1</u>
<u>4</u>	<u>ASSESSMENT OF PANEL TYPES ON VISUAL RECEPTORS</u>	<u>13</u>
	<u>APPENDIX A - ZONES OF THEORETICAL VISIBILITY</u>	<u>31</u>

Issue Sheet

Report Prepared for: Cottam Solar Project Ltd.

Assessment of Landscape and Visual Significant Effects of Panel Types

Prepared by:

Name: Wendy Wright

Title: Associate Director

Approved by:

Name: Chris Jackson

Title: Regional Director

Revision	Date	Prepared by:	Approved by:
original	24 November 2023	WW	CJ

1 Introduction

- 1.1.1 At the first Issue Specific Hearing for the Examination of the West Burton Solar Project ('West Burton'), held on 9 November 2023, the West Burton Applicant was requested to provide a comparative assessment of landscape and visual effects of tracker panels and fixed solar panels. This is recorded as Action Point 6 in the West Burton Written Summary of the Applicant's Oral Submissions & Responses at Issue Specific Hearing 1 and Responses to Action Points [EN010132/EX1/WB8.1.6]. The West Burton Applicant is providing the requested comparative assessment within this document.
- 1.1.2 The Applicant for the Cottam Solar Project conducted an equivalent assessment to consider the potential differences in the significant landscape and visual effects of fixed and tracker panels. For the purposes of this assessment, maximum heights of 3.5 metres for fixed panels and 4.5 metres for tracker panels were used.
- 1.1.3 The results of this assessment are reported in Sections 3 and 4 below.
- 1.1.4 To accompany this assessment, comparative plans of zones of theoretical visibility (ZTV) are provided in Appendix A below.

2 Conclusion

- 2.1.1 The assessment finds that there are no differences in the potential significant effects of fixed panels and tracker panels. Table 3.1 and Table 4.1 provide further detail to support this conclusion.

3 Assessment of Panel Types on Landscape Receptors

Table 3.1: Assessment of Tracker Panels and Fixed Panels on Landscape Receptors

		Construction	Operational		Decommissioning	Construction	Operational		Decommissioning
Landscape Receptors	Sensitivity	Magnitude	Magnitude (Year 1)	Magnitude (Year 15)	Magnitude	Landscape Effects	Landscape Effects (after construction/year 1). With 'primary' and 'secondary' mitigation.	Landscape Effects (after year 15). With 'primary' and 'secondary' mitigation.	Landscape Effects With 'primary' and 'secondary' mitigation.
Regional Scale Landscape Character									
Refer to C6.4.8.5 ES Figure 8.5 [APP-168] for location of Regional Scale Character Areas relative to the Scheme.									
Regional Scale LCT- 4a: Unwooded Vales Cottam 1 Assessment of Tracker panels	Medium	Low Short Term	Low Long Term	Medium Long Term	Very Low Short Term	Minor Adverse Not Significant	Minor Beneficial Not Significant	Moderate Beneficial Significant	Negligible Neutral Not Significant
Regional Scale LCT- 4a: Unwooded Vales Cottam 1 Assessment of Fixed panels	Medium	Low Short Term	Low Long Term	Medium Long Term	Very Low Short Term	Minor Adverse Not Significant	Minor Beneficial Not Significant	Moderate Beneficial Significant	Negligible Neutral Not Significant
Rationale/Conclusions/Discussion: The landscape effects for this receptor (with fixed panels compared to the tracker panels) will not alter the conclusions on significant effects. The value of this landscape receptor is shaped by the strong agricultural character with wide areas retaining a relatively open and expansive landscape. There has been widespread change with loss of hedgerows and increase in field size and the mitigation planting will influence this in a positive way by reducing the scale of the landscape. The experience of this change from a denuded landscape to a landscape with benefits will still be appreciated, even with the fixed panels.									
Regional Scale LCT - 4a: Unwooded Vales Cottam 2 Assessment of Tracker panels	Medium	Low Short Term	Low Long Term	Medium Long Term	Very Low Short Term	Minor Adverse Not Significant	Minor Beneficial Not Significant	Moderate Beneficial Significant	Negligible Neutral Not Significant
Regional Scale LCT - 4a: Unwooded Vales Cottam 2 Assessment of Fixed panels	Medium	Low Short Term	Low Long Term	Medium Long Term	Very Low Short Term	Minor Adverse Not Significant	Minor Beneficial Not Significant	Moderate Beneficial Significant	Negligible Neutral Not Significant
Rationale/Conclusions/Discussion: The landscape effects for this receptor (with fixed panels compared to the tracker panels) will not alter the conclusions on significant effects. The value of this landscape receptor is shaped by the strong agricultural character with wide areas retaining a relatively open and expansive landscape. There has been widespread change with loss of hedgerows and increase in field size and the mitigation planting will influence this in a positive way by reducing the scale of the landscape. The experience of this change from a denuded landscape to a landscape with benefits will still be appreciated, even with the fixed panels.									

		Construction	Operational		Decommissioning	Construction	Operational		Decommissioning	
Landscape Receptors		Sensitivity	Magnitude	Magnitude (Year 1)	Magnitude (Year 15)	Magnitude	Landscape Effects	Landscape Effects (after construction/year 1). With 'primary' and 'secondary' mitigation.	Landscape Effects (after year 15). With 'primary' and 'secondary' mitigation.	Landscape Effects With 'primary' and 'secondary' mitigation.
Regional Scale LCT – 4a: Unwooded Vales Cottam 3a Assessment of Tracker panels		Medium	Low Short Term	Low Long Term	Medium Long Term	Very Low Short Term	Minor Adverse Not Significant	Minor Beneficial Not Significant	Moderate Beneficial Significant	Negligible Neutral Not Significant
Regional Scale LCT – 4a: Unwooded Vales Cottam 3a Assessment of Fixed panels		Medium	Low Short Term	Low Long Term	Medium Long Term	Very Low Short Term	Minor Adverse Not Significant	Minor Beneficial Not Significant	Moderate Beneficial Significant	Negligible Neutral Not Significant
Rationale/Conclusions/Discussion: The landscape effects for this receptor (with fixed panels compared to the tracker panels) will not alter the conclusions on significant effects. The value of this landscape receptor is shaped by the strong agricultural character with wide areas retaining a relatively open and expansive landscape. There has been widespread change with loss of hedgerows and increase in field size and the mitigation planting will influence this in a positive way by reducing the scale of the landscape. The experience of this change from a denuded landscape to a landscape with benefits will still be appreciated, even with the fixed panels.										
Regional Scale LCT – 4a: Unwooded Vales Cottam 3b Assessment of Tracker panels		Medium	Very Low Short Term	Low Long Term	Medium Long Term	Very Low Short Term	Negligible Neutral Not Significant	Minor Beneficial Not Significant	Moderate Beneficial Significant	Negligible Neutral Not Significant
Regional Scale LCT – 4a: Unwooded Vales Cottam 3b Assessment of Fixed panels		Medium	Very Low Short Term	Low Long Term	Medium Long Term	Very Low Short Term	Negligible Neutral Not Significant	Minor Beneficial Not Significant	Moderate Beneficial Significant	Negligible Neutral Not Significant
Rationale/Conclusions/Discussion: The landscape effects for this receptor (with fixed panels compared to the tracker panels) will not alter the conclusions on significant effects. The value of this landscape receptor is shaped by the strong agricultural character with wide areas retaining a relatively open and expansive landscape. There has been widespread change with loss of hedgerows and increase in field size and the mitigation planting will influence this in a positive way by reducing the scale of the landscape. The experience of this change from a denuded landscape to a landscape with benefits will still be appreciated, even with the fixed panels.										
Land Use										
Land Use Cottam 1 Assessment of Tracker panels	5km Study Area	Medium	Very Low Short Term	Low Long Term	Low Long Term	Very Low Short Term	Negligible Neutral Not Significant	Minor Neutral Not Significant	Minor Beneficial Not Significant	Negligible Neutral Not Significant
	Site/Sites and Cable Route Corridor		Low Short Term	Low Long Term	Medium Long Term	Very Low Short Term	Minor Adverse Not Significant	Minor Beneficial Not Significant	Moderate Beneficial Significant	Negligible Neutral Not Significant

			Construction	Operational		Decommissioning	Construction	Operational		Decommissioning
Landscape Receptors		Sensitivity	Magnitude	Magnitude (Year 1)	Magnitude (Year 15)	Magnitude	Landscape Effects	Landscape Effects (after construction/year 1). With 'primary' and 'secondary' mitigation.	Landscape Effects (after year 15). With 'primary' and 'secondary' mitigation.	Landscape Effects With 'primary' and 'secondary' mitigation.
Land Use Cottam 1 Assessment of Fixed panels	5km Study Area	Medium	Very Low Short Term	Low Long Term	Low Long Term	Very Low Short Term	Negligible Neutral Not Significant	Minor Beneficial Not Significant	Minor Beneficial Not Significant	Negligible Neutral Not Significant
	Site/Sites and Cable Route Corridor		Low Short Term	Low Long Term	Medium Long Term	Very Low Short Term	Minor Adverse Not Significant	Minor Beneficial Not Significant	Moderate Beneficial Significant	Negligible Neutral Not Significant
Rationale/Conclusions/Discussion: The landscape effects for this receptor (with fixed panels compared to the tracker panels) will not alter the conclusions on significant effects. The value of this landscape receptor is shaped by this being an extensive low-lying landscape with relatively limited woodland cover, where shelterbelts gain greater visual influence as a result. The area has been extensively farmed and the agricultural intensification has diminished the 'sense of place'. This has included the loss of hedgerows and hedgerow trees and the mitigation planting will influence this by allowing existing hedgerows to grow out, improvements to existing hedgerows and new hedgerows. These landscape benefits will still be appreciated, even with the fixed panels.										
Land Use Cottam 2 Assessment of Tracker panels	5km Study Area	Medium	Very Low Short Term	Low Long Term	Low Long Term	Very Low Short Term	Negligible Neutral Not Significant	Minor Beneficial Not Significant	Minor Beneficial Not Significant	Negligible Neutral Not Significant
	Site/Sites and Cable Route Corridor		Low Short Term	Low Long Term	Medium Long Term	Very Low Short Term	Minor Adverse Not Significant	Minor Beneficial Not Significant	Moderate Beneficial Significant	Negligible Neutral Not Significant
Land Use Cottam 2 Assessment of Fixed panels	5km Study Area	Medium	Very Low Short Term	Low Long Term	Low Long Term	Very Low Short Term	Negligible Neutral Not Significant	Minor Beneficial Not Significant	Minor Beneficial Not Significant	Negligible Neutral Not Significant
	Site/Sites and Cable Route Corridor		Low Short Term	Low Long Term	Medium Long Term	Very Low Short Term	Minor Adverse Not Significant	Minor Beneficial Not Significant	Moderate Beneficial Significant	Negligible Neutral Not Significant
Rationale/Conclusions/Discussion: The landscape effects for this receptor (with fixed panels compared to the tracker panels) will not alter the conclusions on significant effects. The value of this landscape receptor is shaped by this being an extensive low-lying landscape with relatively limited woodland cover, where shelterbelts gain greater visual influence as a result. The area has been extensively farmed and the agricultural intensification has diminished the 'sense of place'. This has included the loss of hedgerows and hedgerow trees and the mitigation planting will influence this by allowing existing hedgerows to grow out, improvements to existing hedgerows and new hedgerows. These landscape benefits will still be appreciated, even with the fixed panels.										
Land Use Cottam 3a and 3b Assessment of Tracker panels	5km Study Area	Medium	Very Low Short Term	Low Long Term	Low Long Term	Very Low Short Term	Negligible Neutral Not Significant	Minor Beneficial Not Significant	Minor Beneficial Not Significant	Negligible Neutral Not Significant
	Site/Sites and Cable Route Corridor		Low Short Term	Low Long Term	Medium Long Term	Very Low Short Term	Minor Adverse Not Significant	Minor Beneficial Not Significant	Moderate Beneficial Significant	Negligible Neutral Not Significant
Land Use Cottam 3a and 3b	5km Study Area	Medium	Very Low Short Term	Low Long Term	Low Long Term	Very Low Short Term	Negligible Neutral Not Significant	Minor Beneficial Not Significant	Minor Beneficial Not Significant	Negligible Neutral Not Significant

			Construction	Operational		Decommissioning	Construction	Operational		Decommissioning
Landscape Receptors		Sensitivity	Magnitude	Magnitude (Year 1)	Magnitude (Year 15)	Magnitude	Landscape Effects	Landscape Effects (after construction/year 1). With 'primary' and 'secondary' mitigation.	Landscape Effects (after year 15). With 'primary' and 'secondary' mitigation.	Landscape Effects With 'primary' and 'secondary' mitigation.
Assessment of Fixed panels	Site/Sites and Cable Route Corridor		Low Short Term	Low Long Term	Medium Long Term	Very Low Short Term	Minor Adverse Not Significant	Minor Beneficial Not Significant	Moderate Beneficial Significant	Negligible Neutral Not Significant
Rationale/Conclusions/Discussion: The landscape effects for this receptor (with fixed panels compared to the tracker panels) will not alter the conclusions on significant effects. The value of this landscape receptor is shaped by this being an extensive low-lying landscape with relatively limited woodland cover, where shelterbelts gain greater visual influence as a result. The area has been extensively farmed and the agricultural intensification has diminished the 'sense of place'. This has included the loss of hedgerows and hedgerow trees and the mitigation planting will influence this by allowing existing hedgerows to grow out, improvements to existing hedgerows and new hedgerows. These landscape benefits will still be appreciated in the same way, even with the fixed panels.										
Topography and Watercourses										
Topography & Watercourses Cottam 1 Assessment of Tracker panels	5km Study Area	Medium	Very Low Short Term	Low Long Term	Low Long Term	Very Low Short Term	Negligible Neutral Not Significant	Minor Beneficial Not Significant	Minor Beneficial Not Significant	Negligible Neutral Not Significant
	Site/Sites and Cable Route Corridor		Very Low Short Term	Low Long Term	Medium Long Term	Very Low Short Term	Negligible Neutral Not Significant	Minor Beneficial Not Significant	Moderate Beneficial Significant	Negligible Neutral Not Significant
Topography & Watercourses Cottam 1 Assessment of Fixed panels	5km Study Area	Medium	Very Low Short Term	Low Long Term	Low Long Term	Very Low Short Term	Negligible Neutral Not Significant	Minor Beneficial Not Significant	Minor Beneficial Not Significant	Negligible Neutral Not Significant
	Site/Sites and Cable Route Corridor		Very Low Short Term	Low Long Term	Medium Long Term	Very Low Short Term	Negligible Neutral Not Significant	Minor Beneficial Not Significant	Moderate Beneficial Significant	Negligible Neutral Not Significant
Rationale/Conclusions/Discussion: The landscape effects for this receptor (with fixed panels compared to the tracker panels) will not alter the conclusions on significant effects. The value of this landscape receptor is shaped by this being an extensive low-lying landscape with flood plains and associated riparian vegetation associated with the River Till. The agricultural intensification has diminished the presence of the network of tributaries, valleys and drainage features. This has included the loss of vegetation and habitats due to the intensive management of watercourses. The mitigation planting will influence this change by providing new scattered tree belts adjacent to watercourses and also open grass buffers adjacent to waterways for biodiversity and improved water quality. These landscape benefits will still be appreciated in the same way, even with the fixed panels.										
Topography & Watercourses Cottam 2 Assessment of Tracker panels	5km Study Area	Medium	Very Low Short Term	Low Long Term	Low Long Term	Very Low Short Term	Negligible Neutral Not Significant	Minor Beneficial Not Significant	Min-Mod Beneficial Not Significant	Negligible Neutral Not Significant
	Site/Sites and Cable Route Corridor		Very Low Short Term	Low Long Term	Medium Long Term	Very Low Short Term	Negligible Neutral Not Significant	Minor Beneficial Not Significant	Moderate Beneficial Significant	Negligible Neutral Not Significant
Topography & Watercourses Cottam 2	5km Study Area	Medium	Very Low Short Term	Low Long Term	Low Long Term	Very Low Short Term	Negligible Neutral Not Significant	Minor Beneficial Not Significant	Min-Mod Beneficial Not Significant	Negligible Neutral Not Significant

			Construction	Operational		Decommissioning	Construction	Operational		Decommissioning
Landscape Receptors		Sensitivity	Magnitude	Magnitude (Year 1)	Magnitude (Year 15)	Magnitude	Landscape Effects	Landscape Effects (after construction/year 1). With 'primary' and 'secondary' mitigation.	Landscape Effects (after year 15). With 'primary' and 'secondary' mitigation.	Landscape Effects With 'primary' and 'secondary' mitigation.
Assessment of Fixed panels	Site/Sites and Cable Route Corridor		Very Low Short Term	Low Long Term	Medium Long Term	Very Low Short Term	Negligible Neutral Not Significant	Minor Beneficial Not Significant	Moderate Beneficial Significant	Negligible Neutral Not Significant
Rationale/Conclusions/Discussion: The landscape effects for this receptor (with fixed panels compared to the tracker panels) will not alter the conclusions on significant effects. The value of this landscape receptor is shaped by this being an extensive low-lying landscape with flood plains and associated riparian vegetation associated with the River Till. The agricultural intensification has diminished the presence of the network of tributaries, valleys and drainage features. This has included the loss of vegetation and habitats due to the intensive management of watercourses. The mitigation planting will influence this change by providing new scattered tree belts adjacent to watercourses and also open grass buffers adjacent to waterways for biodiversity and improved water quality. These landscape benefits will still be appreciated in the same way, even with the fixed panels.										
Topography & Watercourses Cottam 3 Assessment of Tracker panels	5km Study Area	Medium	Very Low Short Term	Low Long Term	Low Long Term	Very Low Short Term	Negligible Neutral Not Significant	Minor Beneficial Not Significant	Minor Beneficial Not Significant	Negligible Neutral Not Significant
	Site/Sites and Cable Route Corridor		Very Low Short Term	Low Long Term	Medium Long Term	Very Low Short Term	Negligible Neutral Not Significant	Minor Beneficial Not Significant	Moderate Beneficial Significant	Negligible Neutral Not Significant
Topography & Watercourses Cottam 3 Assessment of Fixed panels	5km Study Area	Medium	Very Low Short Term	Low Long Term	Low Long Term	Very Low Short Term	Negligible Neutral Not Significant	Minor Beneficial Not Significant	Minor Beneficial Not Significant	Negligible Neutral Not Significant
	Site/Sites and Cable Route Corridor		Very Low Short Term	Low Long Term	Medium Long Term	Very Low Short Term	Negligible Neutral Not Significant	Minor Beneficial Not Significant	Moderate Beneficial Significant	Negligible Neutral Not Significant
Rationale/Conclusions/Discussion: The landscape effects for this receptor (with fixed panels compared to the tracker panels) will not alter the conclusions on significant effects. The value of this landscape receptor is shaped by this being an extensive low-lying landscape with flood plains and associated riparian vegetation associated with the River Till. The agricultural intensification has diminished the presence of the network of tributaries, valleys and drainage features. This has included the loss of vegetation and habitats due to the intensive management of watercourses. The mitigation planting will influence this change by providing new scattered tree belts adjacent to watercourses and also open grass buffers adjacent to waterways for biodiversity and improved water quality. These landscape benefits will still be appreciated in the same way, even with the fixed panels.										
Communication and Infrastructure										
Communication and Infrastructure Cottam 1 Assessment of Tracker panels	5km Study Area	Medium	Low Short Term	Low Long Term	Low Long Term	Very Low Short Term	Minor Adverse Not Significant	Minor Adverse Not Significant	Minor Adverse Not Significant	Negligible Neutral Not Significant
	Site/Sites and Cable Route Corridor		Medium Short Term	Low Long Term	Low Long Term	Very Low Short Term	Moderate Adverse Significant	Minor Adverse Not Significant	Minor Adverse Not Significant	Negligible Neutral Not Significant
Communication and Infrastructure Cottam 1	5km Study Area	Medium	Low Short Term	Low Long Term	Low Long Term	Very Low Short Term	Minor Adverse Not Significant	Minor Adverse Not Significant	Minor Adverse Not Significant	Negligible Neutral Not Significant

			Construction	Operational		Decommissioning	Construction	Operational		Decommissioning
Landscape Receptors		Sensitivity	Magnitude	Magnitude (Year 1)	Magnitude (Year 15)	Magnitude	Landscape Effects	Landscape Effects (after construction/year 1). With 'primary' and 'secondary' mitigation.	Landscape Effects (after year 15). With 'primary' and 'secondary' mitigation.	Landscape Effects With 'primary' and 'secondary' mitigation.
Assessment of Fixed panels	Site/Sites and Cable Route Corridor		Medium Short Term	Low Long Term	Low Long Term	Very Low Short Term	Moderate Adverse Significant	Minor Adverse Not Significant	Minor Adverse Not significant	Negligible Neutral Not Significant
Rationale/Conclusions/Discussion: The landscape effects for this receptor (with fixed panels compared to the tracker panels) will not alter the conclusions on significant effects. The value of this landscape receptor is shaped by this being a strategic road network defined by important historic routes that run north south. In contrast there is a minor road network that runs east west linking a smaller string of settlement that feature as historic components of the landscape. Overall, this prevailing road network around and within the Site/s is formed by narrow lanes that are often tranquil and hedged to both sides with wide grass verges. These routes are used for informal recreation and there will be significant adverse effects at the construction stage. These significant adverse effects will still be experienced in the same way, even with the fixed panels.										
Communication and Infrastructure Cottam 2 Assessment of Tracker panels	5km Study Area	Medium	Low Short Term	Low Long Term	Low Long Term	Very Low Short Term	Minor Adverse Not Significant	Minor Adverse Not Significant	Minor Adverse Not Significant	Negligible Neutral Not Significant
	Site/Sites and Cable Route Corridor		Medium Short Term	Low Long Term	Low Long Term	Very Low Short Term	Moderate Adverse Significant	Minor Adverse Not Significant	Minor Adverse Not Significant	Negligible Neutral Not Significant
Communication and Infrastructure Cottam 2 Assessment of Fixed panels	5km Study Area	Medium	Low Short Term	Low Long Term	Low Long Term	Very Low Short Term	Minor Adverse Not Significant	Minor Adverse Not Significant	Minor Adverse Not Significant	Negligible Neutral Not Significant
	Site/Sites and Cable Route Corridor		Medium Short Term	Low Long Term	Low Long Term	Very Low Short Term	Moderate Adverse Significant	Minor Adverse Not Significant	Minor Adverse Not Significant	Negligible Neutral Not Significant
Rationale/Conclusions/Discussion: The landscape effects for this receptor (with fixed panels compared to the tracker panels) will not alter the conclusions on significant effects. The value of this landscape receptor is shaped by this being a strategic road network defined by important historic routes that run north south. In contrast there is a minor road network that runs east west linking a smaller string of settlement that feature as historic components of the landscape. Overall, this prevailing road network around and within the Site/s is formed by narrow lanes that are often tranquil and hedged to both sides with wide grass verges. These routes are used for informal recreation and there will be significant adverse effects at the construction stage. These significant adverse effects will still be experienced in the same way, even with the fixed panels.										
Communication and Infrastructure Cottam 3 Assessment of Tracker panels	5km Study Area	Medium	Low Short Term	Low Long Term	Low Long Term	Very Low Short Term	Minor Adverse Not Significant	Minor Adverse Not Significant	Minor Adverse Not Significant	Negligible Neutral Not Significant
	Site/Sites and Cable Route Corridor		Medium Short Term	Low Long Term	Low Long Term	Very Low Short Term	Moderate Adverse Significant	Minor Adverse Not Significant	Minor Adverse Not Significant	Negligible Neutral Not Significant
Communication and Infrastructure Cottam 3 Assessment of Fixed panels	5km Study Area	Medium	Low Short Term	Low Long Term	Low Long Term	Very Low Short Term	Minor Adverse Not Significant	Minor Adverse Not Significant	Minor Adverse Not Significant	Negligible Neutral Not Significant
	Site/Sites and Cable Route Corridor		Medium Short Term	Low Long Term	Low Long Term	Very Low Short Term	Moderate Adverse Significant	Minor Adverse Not Significant	Minor Adverse Not Significant	Negligible Neutral Not Significant

		Construction	Operational		Decommissioning	Construction	Operational		Decommissioning	
Landscape Receptors	Sensitivity	Magnitude	Magnitude (Year 1)	Magnitude (Year 15)	Magnitude	Landscape Effects	Landscape Effects (after construction/year 1). With 'primary' and 'secondary' mitigation.	Landscape Effects (after year 15). With 'primary' and 'secondary' mitigation.	Landscape Effects With 'primary' and 'secondary' mitigation.	
<p>Rationale/Conclusions/Discussion: The landscape effects for this receptor (with fixed panels compared to the tracker panels) will not alter the conclusions on significant effects. The value of this landscape receptor is shaped by this being a strategic road network defined by important historic routes that run north south. In contrast there is a minor road network that runs east west linking a smaller string of settlement that feature as historic components of the landscape. Overall, this prevailing road network around and within the Site/s is formed by narrow lanes that are often tranquil and hedged to both sides with wide grass verges. These routes are used for informal recreation and there will be significant adverse effects at the construction stage. These significant adverse effects will still be experienced in the same way, even with the fixed panels.</p>										
<p>National and Locally Designated Landscapes</p>										
Nationally and Locally Designated Landscapes Cottam 1 Assessment of Tracker panels	5km Study Area	High	Very Low Short Term	Very Low Long Term	Very Low Neutral & Long Term	Very Low Neutral & Short Term	Negligible Adverse Not Significant	Negligible Beneficial Not Significant	Negligible Neutral Not Significant	Negligible Neutral Not Significant
	Site/Sites and Cable Route Corridor	Medium	Low Short Term	Low Long Term	Medium Long Term	Very Low Short Term	Minor Adverse Not Significant	Minor Beneficial Not Significant	Moderate Beneficial Significant	Negligible Short Term Not Significant
Nationally and Locally Designated Landscapes Cottam 1 Assessment of Fixed panels	5km Study Area	High	Very Low Short Term	Very Low Long Term	Very Low Neutral & Long Term	Very Low Neutral & Short Term	Negligible Adverse Not Significant	Negligible Beneficial Not Significant	Negligible Neutral Not Significant	Negligible Neutral Not Significant
	Site/Sites and Cable Route Corridor	Medium	Low Short Term	Low Long Term	Medium Long Term	Very Low Short Term	Minor Adverse Not Significant	Minor Beneficial Not Significant	Moderate Beneficial Significant	Negligible Short Term Not Significant
<p>Rationale/Conclusions/Discussion: The landscape effects for this receptor (with fixed panels compared to the tracker panels) will not alter the conclusions on significant effects. The value of this landscape receptor is shaped by the Site/s being part of a wider landscape outside the local landscape designations, these being Areas of Greater Landscape Value (AGLV). These designations are defined by the striking differences between character such as the open Till Vale, prominent ridgeline or 'Cliff' and the enclosed woodland areas around Laughton. Agricultural intensification has diminished the features that define the wider setting to these AGLVs and this in turn has led to a homogeneous landscape. The appreciation of these contrasts is affected by loss of hedgerows and increases in field sizes and the mitigation planting will address this by providing new scattered tree belts adjacent to watercourses, new and improved hedgerows and scattered tree planting. These landscape benefits will still be appreciated in the same way, even with the fixed panels.</p>										
Nationally and Locally Designated Landscapes Cottam 2 Assessment of Tracker panels	5km Study Area	High	Very Low Short Term	Very Low Long Term	Very Low Long Term	Very Low Short Term	Negligible Adverse Not Significant	Negligible Beneficial Not Significant	Negligible Neutral Not Significant	Negligible Neutral Not Significant
	Site/Sites and Cable Route Corridor	Medium	Low Short Term	Low Long Term	Medium Long Term	Very Low Short Term	Minor Adverse Not Significant	Minor Beneficial Not Significant	Moderate Beneficial Significant	Negligible Neutral Not Significant
Nationally and Locally Designated Landscapes Cottam 2 Assessment of Fixed panels	5km Study Area	High	Very Low Short Term	Very Low Long Term	Very Low Long Term	Very Low Short Term	Negligible Adverse Not Significant	Negligible Beneficial Not Significant	Negligible Neutral Not Significant	Negligible Neutral Not Significant
	Site/Sites and Cable Route Corridor	Medium	Low Short Term	Low Long Term	Medium Long Term	Very Low Short Term	Minor Adverse Not Significant	Minor Beneficial Not Significant	Moderate Beneficial Significant	Negligible Neutral Not Significant

		Construction	Operational		Decommissioning	Construction	Operational		Decommissioning	
Landscape Receptors	Sensitivity	Magnitude	Magnitude (Year 1)	Magnitude (Year 15)	Magnitude	Landscape Effects	Landscape Effects (after construction/year 1). With 'primary' and 'secondary' mitigation.	Landscape Effects (after year 15). With 'primary' and 'secondary' mitigation.	Landscape Effects With 'primary' and 'secondary' mitigation.	
Rationale/Conclusions/Discussion: The landscape effects for this receptor (with fixed panels compared to the tracker panels) will not alter the conclusions on significant effects. The value of this landscape receptor is shaped by the Site/s being part of a wider landscape outside the local landscape designations, these being Areas of Greater Landscape Value (AGLV). These designations are defined by the striking differences between character such as the open Till Vale, prominent ridgeline or 'Cliff' and the enclosed woodland areas around Laughton. Agricultural intensification has diminished the features that define the wider setting to these AGLVs and this in turn has led to a homogeneous landscape. The appreciation of these contrasts is affected by loss of hedgerows and increases in field sizes and the mitigation planting will address this by providing new scattered tree belts adjacent to watercourses, new and improved hedgerows and scattered tree planting. These landscape benefits will still be appreciated in the same way, even with the fixed panels.										
Nationally and Locally Designated Landscapes Cottam 3 Assessment of Tracker panels	5km Study Area	High	Very Low Short Term	Very Low Long Term	Very Low Long Term	Very Low Short Term	Negligible Adverse Not Significant	Negligible Neutral Not Significant	Negligible Neutral Not Significant	Negligible Beneficial Not Significant
	Site/Sites and Cable Route Corridor	Medium	Low Short Term	Low Long Term	Medium Long Term	Very Low Short Term	Minor Adverse Not Significant	Minor Beneficial Not Significant	Moderate Beneficial Significant	Negligible Neutral Not Significant
Nationally and Locally Designated Landscapes Cottam 3 Assessment of Fixed panels	5km Study Area	High	Very Low Short Term	Very Low Long Term	Very Low Long Term	Very Low Short Term	Negligible Adverse Not Significant	Negligible Neutral Not Significant	Negligible Neutral Not Significant	Negligible Beneficial Not Significant
	Site/Sites and Cable Route Corridor	Medium	Low Short Term	Low Long Term	Medium Long Term	Very Low Short Term	Minor Adverse Not Significant	Minor Beneficial Not Significant	Moderate Beneficial Significant	Negligible Neutral Not Significant
Rationale/Conclusions/Discussion: The landscape effects for this receptor (with fixed panels compared to the tracker panels) will not alter the conclusions on significant effects. The value of this landscape receptor is shaped by the Site/s being part of a wider landscape outside the local landscape designations, these being Areas of Greater Landscape Value (AGLV). These designations are defined by the striking differences between character such as the open Till Vale, prominent ridgeline or 'Cliff' and the enclosed woodland areas around Laughton. Agricultural intensification has diminished the features that define the wider setting to these AGLVs and this in turn has led to a homogeneous landscape. The appreciation of these contrasts is affected by loss of hedgerows and increases in field sizes and the mitigation planting will address this by providing new scattered tree belts adjacent to watercourses, new and improved hedgerows and scattered tree planting. These landscape benefits will still be appreciated in the same way, even with the fixed panels.										
Ancient Woodlands and Natural Designations										
Ancient Woodlands and Natural Designations Cottam 1 Assessment of Tracker panels	5km Study Area	Medium	Very Low Short Term	Low Long Term	Low Long Term	Very Low Short Term	Negligible Not Significant	Minor Beneficial Not Significant	Minor Beneficial Not Significant	Negligible Neutral Not Significant
	Site/Sites and Cable Route Corridor		Low Short Term	Low Long Term	Medium Long Term	Very Low Short Term	Minor Adverse Not Significant	Minor Beneficial Not Significant	Moderate Beneficial Significant	Negligible Neutral Not Significant
Ancient Woodlands and Natural Designations Cottam 1 Assessment of Fixed panels	5km Study Area	Medium	Very Low Short Term	Low Long Term	Low Long Term	Very Low Short Term	Negligible Not Significant	Minor Beneficial Not Significant	Minor Beneficial Not Significant	Negligible Neutral Not Significant
	Site/Sites and Cable Route Corridor		Low Short Term	Low Long Term	Medium Long Term	Very Low Short Term	Minor Adverse Not Significant	Minor Beneficial Not Significant	Moderate Beneficial Significant	Negligible Neutral Not Significant

		Construction	Operational		Decommissioning	Construction	Operational		Decommissioning	
Landscape Receptors		Sensitivity	Magnitude	Magnitude (Year 1)	Magnitude (Year 15)	Magnitude	Landscape Effects	Landscape Effects (after construction/year 1). With 'primary' and 'secondary' mitigation.	Landscape Effects (after year 15). With 'primary' and 'secondary' mitigation.	Landscape Effects With 'primary' and 'secondary' mitigation.
<p>Rationale/Conclusions/Discussion: The landscape effects for this receptor (with fixed panels compared to the tracker panels) will not alter the conclusions on significant effects. The value of this landscape receptor is shaped by the intensive agricultural activity that has modified habitats and their connectivity. The local road network is therefore a key feature of the landscape to improve the habitat connectivity in an east west direction between the 'Cliff' or ridgeline, across the Till Vale then linking to the Trent Floodplain in the west. These local road networks can realise significant natural capital and green infrastructure opportunities through the mitigation planting through the improvement of the verge side hedgerows and planting new hedgerows to provide improved corridors for species migration, by changes to grassland management to benefit biodiversity and by improvements to the riparian habitats that link with these local roads. These landscape benefits will still be appreciated in the same way, even with the fixed panels.</p>										
Ancient Woodlands and Natural Designations Cottam 2 Assessment of Tracker panels	5km Study Area	Medium	Very Low Short Term	Low Long Term	Low Long Term	Very Low Short Term	Negligible Neutral Not Significant	Minor Beneficial Not Significant	Minor Beneficial Not Significant	Negligible Neutral Not Significant
	Site/Sites and Cable Route Corridor		Low Short Term	Low Long Term	Medium Long Term	Very Low Short Term	Minor Adverse Not Significant	Minor Beneficial Not Significant	Moderate Beneficial Significant	Negligible Neutral Not Significant
Ancient Woodlands and Natural Designations Cottam 2 Assessment of Fixed panels	5km Study Area	Medium	Very Low Short Term	Low Long Term	Low Long Term	Very Low Short Term	Negligible Neutral Not Significant	Minor Beneficial Not Significant	Minor Beneficial Not Significant	Negligible Neutral Not Significant
	Site/Sites and Cable Route Corridor		Low Short Term	Low Long Term	Medium Long Term	Very Low Short Term	Minor Adverse Not Significant	Minor Beneficial Not Significant	Moderate Beneficial Significant	Negligible Neutral Not Significant
<p>Rationale/Conclusions/Discussion: The landscape effects for this receptor (with fixed panels compared to the tracker panels) will not alter the conclusions on significant effects. The value of this landscape receptor is shaped by the intensive agricultural activity that has modified habitats and their connectivity. The local road network is therefore a key feature of the landscape to improve the habitat connectivity in an east west direction between the 'Cliff' or ridgeline, across the Till Vale then linking to the Trent Floodplain in the west. These local road networks can realise significant natural capital and green infrastructure opportunities through the mitigation planting through the improvement of the verge side hedgerows and planting new hedgerows to provide improved corridors for species migration, by changes to grassland management to benefit biodiversity and by improvements to the riparian habitats that link with these local roads. These landscape benefits will still be appreciated in the same way, even with the fixed panels.</p>										
Ancient Woodlands and Natural Designations Cottam 3 Assessment of Tracker panels	5km Study Area	Medium	Very Low Short Term	Low Long Term	Low Long Term	Very Low Short Term	Negligible Neutral Not Significant	Minor Beneficial Not Significant	Minor Beneficial Not Significant	Negligible Neutral Not Significant
	Site/Sites and Cable Route Corridor		Medium	Low Short Term	Low Long Term	Medium Long Term	Very Low Short Term	Minor Adverse Not Significant	Minor Beneficial Not Significant	Moderate Beneficial Significant
Ancient Woodlands and Natural Designations Cottam 3 Assessment of Fixed panels	5km Study Area	Medium	Very Low Short Term	Low Long Term	Low Long Term	Very Low Short Term	Negligible Neutral Not Significant	Minor Beneficial Not Significant	Minor Beneficial Not Significant	Negligible Neutral Not Significant
	Site/Sites and Cable Route Corridor		Medium	Low Short Term	Low Long Term	Medium Long Term	Very Low Short Term	Minor Adverse Not Significant	Minor Beneficial Not Significant	Moderate Beneficial Significant
<p>Rationale/Conclusions/Discussion: The landscape effects for this receptor (with fixed panels compared to the tracker panels) will not alter the conclusions on significant effects. The value of this landscape receptor is shaped by the intensive agricultural activity that has modified habitats and their connectivity. The local road network is therefore a key feature of the landscape to improve the habitat connectivity in an east west direction between the 'Cliff' or ridgeline, across the Till Vale then linking to the Trent Floodplain in the west. These local road networks can realise significant natural capital and green infrastructure opportunities through the mitigation planting through the improvement of the verge side hedgerows and</p>										

		Construction	Operational		Decommissioning	Construction	Operational		Decommissioning	
Landscape Receptors	Sensitivity	Magnitude	Magnitude (Year 1)	Magnitude (Year 15)	Magnitude	Landscape Effects	Landscape Effects (after construction/year 1). With 'primary' and 'secondary' mitigation.	Landscape Effects (after year 15). With 'primary' and 'secondary' mitigation.	Landscape Effects With 'primary' and 'secondary' mitigation.	
planting new hedgerows to provide improved corridors for species migration, by changes to grassland management to benefit biodiversity and by improvements to the riparian habitats that link with these local roads. These landscape benefits will still be appreciated in the same way, even with the fixed panels.										
Substation Sites										
Regional Scale LCT 4a: Unwooded Vales Substation Site Cottam 1 West A Assessment of Tracker panels	5km Study Area	Medium	Very Low Short Term	Low Long Term	Low Long Term	Very Low Short Term	Negligible Adverse Not Significant	Minor Adverse Not Significant	Minor Adverse Not Significant	Negligible Neutral Not Significant
	Land Use	Medium	High Short Term	High Long Term	Medium Long Term	Low Short Term	Mod-Maj Adverse Significant	Mod-Maj Adverse Significant	Moderate Adverse Significant	Minor Neutral Not Significant
	Topography	Medium	High Short Term	High Long Term	Medium Long Term	Low Short Term	Mod-Maj Adverse Significant	Mod-Maj Adverse Significant	Moderate Adverse Significant	Minor Neutral Not Significant
Regional Scale LCT 4a: Unwooded Vales Substation Site Cottam 1 West A Assessment of Fixed panels	5km Study Area	Medium	Very Low Short Term	Low Long Term	Low Long Term	Very Low Short Term	Negligible Adverse Not Significant	Minor Adverse Not Significant	Minor Adverse Not Significant	Negligible Neutral Not Significant
	Land Use	Medium	High Short Term	High Long Term	Medium Long Term	Low Short Term	Mod-Maj Adverse Significant	Mod-Maj Adverse Significant	Moderate Adverse Significant	Minor Neutral Not Significant
	Topography	Medium	High Short Term	High Long Term	Medium Long Term	Low Short Term	Mod-Maj Adverse Significant	Mod-Maj Adverse Significant	Moderate Adverse Significant	Minor Neutral Not Significant
Rationale/Conclusions/Discussion: The landscape effects for this receptor (with fixed panels compared to the tracker panels) will not alter the conclusions on significant effects.										
Regional Scale LCT 4a: Unwooded Vales Substation Site Cottam 1 West B Assessment of Tracker panels	5km Study Area	Medium	Very Low Short Term	Low Long Term	Low Long Term	Very Low Short Term	Negligible Adverse Not Significant	Minor Adverse Not Significant	Minor Adverse Not Significant	Negligible Neutral Not Significant
	Land Use	Medium	High Short Term	High Long Term	Medium Long Term	Low Short Term	Mod-Maj Adverse Significant	Mod-Maj Adverse Significant	Moderate Adverse Significant	Minor Neutral Not Significant
	Topography	Medium	High Short Term	High Long Term	Medium Long Term	Low Short Term	Mod-Maj Adverse Significant	Mod-Maj Adverse Significant	Moderate Adverse Significant	Minor Neutral Not Significant
Regional Scale LCT 4a: Unwooded Vales Substation Site Cottam 1 West B	5km Study Area	Medium	Very Low Short Term	Low Long Term	Low Long Term	Very Low Short Term	Negligible Adverse Not Significant	Minor Adverse Not Significant	Minor Adverse Not Significant	Negligible Neutral Not Significant
	Land Use	Medium	High Short Term	High Long Term	Medium Long Term	Low Short Term	Mod-Maj Adverse	Mod-Maj Adverse	Moderate Adverse	Minor Neutral

		Construction	Operational		Decommissioning	Construction	Operational		Decommissioning	
Landscape Receptors		Sensitivity	Magnitude	Magnitude (Year 1)	Magnitude (Year 15)	Magnitude	Landscape Effects	Landscape Effects (after construction/year 1). With 'primary' and 'secondary' mitigation.	Landscape Effects (after year 15). With 'primary' and 'secondary' mitigation.	Landscape Effects With 'primary' and 'secondary' mitigation.
Assessment of Fixed panels							Significant	Significant	Significant	Not Significant
	Topography	Medium	High Short Term	High Long Term	Medium Long Term	Low Short Term	Mod-Maj Adverse Significant	Mod-Maj Adverse Significant	Moderate Adverse Significant	Minor Neutral Not Significant
Rationale/Conclusions/Discussion: The landscape effects for this receptor (with fixed panels compared to the tracker panels) will not alter the conclusions on significant effects.										
Regional Scale LCT 4a: Unwooded Vales Substation Site Cottam 2 Assessment of Tracker panels	5km Study Area	Medium	Very Low Short Term	Low Long Term	Low Long Term	Very Low Short Term	Negligible Adverse Not Significant	Minor Adverse Not Significant	Minor Adverse Not Significant	Negligible Neutral Not Significant
	Land Use	Medium	High Short Term	High Long Term	Medium Long Term	Low Short Term	Mod-Maj Adverse Significant	Mod-Maj Adverse Significant	Moderate Adverse Significant	Minor Neutral Not Significant
	Topography	Medium	High Short Term	High Long Term	Medium Long Term	Low Short Term	Mod-Maj Adverse Significant	Mod-Maj Adverse Significant	Moderate Adverse Significant	Minor Neutral Not Significant
Regional Scale LCT 4a: Unwooded Vales Substation Site Cottam 2 Assessment of Fixed panels	5km Study Area	Medium	Very Low Short Term	Low Long Term	Low Long Term	Very Low Short Term	Negligible Adverse Not Significant	Minor Adverse Not Significant	Minor Adverse Not Significant	Negligible Neutral Not Significant
	Land Use	Medium	High Short Term	High Long Term	Medium Long Term	Low Short Term	Mod-Maj Adverse Significant	Mod-Maj Adverse Significant	Moderate Adverse Significant	Minor Neutral Not Significant
	Topography	Medium	High Short Term	High Long Term	Medium Long Term	Low Short Term	Mod-Maj Adverse Significant	Mod-Maj Adverse Significant	Moderate Adverse Significant	Minor Neutral Not Significant
Rationale/Conclusions/Discussion: The landscape effects for this receptor (with fixed panels compared to the tracker panels) will not alter the conclusions on significant effects.										
Regional Scale LCT 4a: Unwooded Vales Substation Site Cottam 3a Assessment of Tracker panels	5km Study Area	Medium	Very Low Short Term	Low Long Term	Low Long Term	Very Low Short Term	Negligible Adverse Not Significant	Minor Adverse Not Significant	Minor Adverse Not Significant	Negligible Neutral Not Significant
	Land Use	Medium	High Short Term	High Long Term	Medium Long Term	Low Short Term	Mod-Maj Adverse Significant	Mod-Maj Adverse Significant	Moderate Adverse Significant	Minor Neutral Not Significant
	Topography	Medium	High Short Term	High Long Term	Medium Long Term	Low Short Term	Mod-Maj Adverse Significant	Mod-Maj Adverse Significant	Moderate Adverse Significant	Minor Neutral Not Significant
Regional Scale LCT 4a: Unwooded Vales Substation Site	5km Study Area	Medium	Very Low Short Term	Low Long Term	Low Long Term	Very Low Short Term	Negligible Adverse Not Significant	Minor Adverse Not Significant	Minor Adverse Not Significant	Negligible Neutral Not Significant

		Construction	Operational		Decommissioning	Construction	Operational		Decommissioning	
Landscape Receptors		Sensitivity	Magnitude	Magnitude (Year 1)	Magnitude (Year 15)	Magnitude	Landscape Effects	Landscape Effects (after construction/year 1). With 'primary' and 'secondary' mitigation.	Landscape Effects (after year 15). With 'primary' and 'secondary' mitigation.	Landscape Effects With 'primary' and 'secondary' mitigation.
Cottam 3a Assessment of Fixed panels	Land Use	Medium	High Short Term	High Long Term	Medium Long Term	Low Short Term	Mod-Maj Adverse Significant	Mod-Maj Adverse Significant	Moderate Adverse Significant	Minor Neutral Not Significant
	Topography	Medium	High Short Term	High Long Term	Medium Long Term	Low Short Term	Mod-Maj Adverse Significant	Mod-Maj Adverse Significant	Moderate Adverse Significant	Minor Neutral Not Significant
Rationale/Conclusions/Discussion: The landscape effects for this receptor (with fixed panels compared to the tracker panels) will not alter the conclusions on significant effects.										
Regional Scale LCT 4a: Unwooded Vales Substations Cottam 3b Assessment of Tracker panels	5km Study Area	Medium	Very Low Short Term	Low Long Term	Low Long Term	Very Low Short Term	Negligible Adverse Not Significant	Minor Adverse Not Significant	Minor Adverse Not Significant	Negligible Neutral Not Significant
	Land Use	Medium	High Short Term	High Long Term	Medium Long Term	Low Short Term	Mod-Maj Adverse Significant	Mod-Maj Adverse Significant	Moderate Adverse Significant	Minor Neutral Not Significant
	Topography	Medium	High Short Term	High Long Term	Medium Long Term	Low Short Term	Mod-Maj Adverse Significant	Mod-Maj Adverse Significant	Moderate Adverse Significant	Minor Neutral Not Significant
Regional Scale LCT 4a: Unwooded Vales Substations Cottam 3b Assessment of Fixed panels	5km Study Area	Medium	Very Low Short Term	Low Long Term	Low Long Term	Very Low Short Term	Negligible Adverse Not Significant	Minor Adverse Not Significant	Minor Adverse Not Significant	Negligible Neutral Not Significant
	Land Use	Medium	High Short Term	High Long Term	Medium Long Term	Low Short Term	Mod-Maj Adverse Significant	Mod-Maj Adverse Significant	Moderate Adverse Significant	Minor Neutral Not Significant
	Topography	Medium	High Short Term	High Long Term	Medium Long Term	Low Short Term	Mod-Maj Adverse Significant	Mod-Maj Adverse Significant	Moderate Adverse Significant	Minor Neutral Not Significant
Rationale/Conclusions/Discussion: The landscape effects for this receptor (with fixed panels compared to the tracker panels) will not alter the conclusions on significant effects.										

4 Assessment of Panel Types on Visual Receptors

Table 4.1: Assessment of Tracker Panels and Fixed Panels on Visual Receptors

		Magnitude of Change				Significance of Effect			
		Construction	Operational		Decommissioning	Construction	Operational		Decommissioning
Visual Receptors	Sensitivity	Magnitude	Magnitude (Year 1)	Magnitude (Year 15)	Magnitude	Visual Effects	Visual Effects (after construction/ year 1). With 'primary' and 'secondary' mitigation.	Visual Effects (after Year 15). With 'primary' and 'secondary' mitigation.	Visual Effects With 'primary' and 'secondary' mitigation.
Viewpoint Receptors									
Viewpoint VP04: Thorpe Lane, Local Bridge Cottam 1 [APP-202] Assessment of Tracker panels	Med-High	Medium Short Term	High Long Term	Medium Long Term	Low Short Term	Mod-Maj Adverse Significant	Maj-Mod Adverse Significant	Mod-Maj Adverse Significant	Min-Mod Adverse Not Significant
Viewpoint VP04: Thorpe Lane, Local Bridge Cottam 1 [APP-202] Assessment of Fixed panels	Med-High	Medium Short Term	High Long Term	Medium Long Term	Low Short Term	Mod-Maj Adverse Significant	Maj-Mod Adverse Significant	Mod-Maj Adverse Significant	Min-Mod Adverse Not Significant
Rationale/Conclusions/Discussion: The visual effects at this location (with fixed panels compared to the tracker panels) will not alter the conclusions on significant effects. The value of this viewpoint is shaped by the interruption of a local bridge crossing on Thorpe Lane that provides a point of interest and the opportunity to capture views across the landscape. The ability to appreciate these views will still be impeded by the fixed panels.									
Viewpoint VP05: TLFe/31/2 Cottam 1 [APP-203] Assessment of Tracker panels	Med-High	Medium Short Term	High Long Term	Medium Long Term	Very Low Short Term	Mod-Maj Adverse Significant	Maj-Mod Adverse Significant	Min-Mod Beneficial Not Significant	Negligible Neutral Not Significant
Viewpoint VP05: TLFe/31/2 Cottam 1 [APP-203] Assessment of Fixed panels	Med-High	Medium Short Term	High Long Term	Medium Long Term	Very Low Short Term	Mod-Maj Adverse Significant	Maj-Mod Adverse Significant	Min-Mod Beneficial Not Significant	Negligible Neutral Not Significant
Rationale/Conclusions/Discussion: The visual effects at this location (with the fixed panels compared to the tracker panels) will not alter the conclusions on significant effects. The value of this viewpoint is shaped by the sequence of views from the bridgeway; some enclosed and some open in nature with the mitigation planting reinforcing this. The experience of the open and enclosed nature of the views and the benefits of the mitigation planting will still be appreciated, even with the fixed panels.									
Viewpoint VP06: Thorpe Lane Cottam 1 [APP-204] Assessment of Tracker panels	Med-High	Medium Short Term	High Long Term	Medium Long Term	Low Short Term	Mod-Maj Adverse Significant	Maj-Mod Adverse Significant	Min-Mod Beneficial Not Significant	Minor-Moderate Neutral Not Significant
Viewpoint VP06: Thorpe Lane Cottam 1 [APP-204] Assessment of Fixed panels	Med-High	Medium Short Term	High Long Term	Medium Long Term	Low Short Term	Mod-Maj Adverse Significant	Maj-Mod Adverse Significant	Min-Mod Beneficial Not Significant	Minor-Moderate Neutral Not Significant
Rationale/Conclusions/Discussion: The visual effects at this location (with the fixed panels compared to the tracker panels) will not alter the conclusions on significant effects. The value of the view is shaped by Thorpe Lane as being typical of the east-west road network, the visual appreciation of historic settlement along these routes and the ability of the mitigation planting to reinforce this. The experience of the historic context associated with the view and the benefits of the mitigation planting will still be appreciated, even with the fixed panels.									

		Magnitude of Change				Significance of Effect			
		Construction	Operational		Decommissioning	Construction	Operational		Decommissioning
Visual Receptors	Sensitivity	Magnitude	Magnitude (Year 1)	Magnitude (Year 15)	Magnitude	Visual Effects	Visual Effects (after construction/ year 1). With 'primary' and 'secondary' mitigation.	Visual Effects (after Year 15). With 'primary' and 'secondary' mitigation.	Visual Effects With 'primary' and 'secondary' mitigation.
Viewpoint VP07: TLFe/32/1 Cottam 1 [APP-205] Assessment of Tracker panels	Med-High	Medium Short Term	High Long Term	Medium Long Term	Low Short Term	Mod-Maj Adverse Significant	Maj-Mod Adverse Significant	Mod-Maj Adverse Significant	Min-Mod Adverse Not Significant
Viewpoint VP07: TLFe/32/1 Cottam 1 [APP-205] Assessment of Fixed panels	Med-High	Medium Short Term	High Long Term	Medium Long Term	Low Short Term	Mod-Maj Adverse Significant	Maj-Mod Adverse Significant	Mod-Maj Adverse Significant	Min-Mod Adverse Not Significant
Rationale/Conclusions/Discussion: The visual effects at this location (with the fixed panels compared to the tracker panels) will not alter the conclusions on significant effects. The value of the view is shaped by the presence of the River Till and where it meets with local road networks. The ability of the River Till in framing views from this location will still be impeded by the fixed panels.									
Viewpoint VP10: Stur/73/1 Cottam 1 [APP-208] Assessment of Tracker panels	Medium	Medium Short Term	High Long Term	Medium Long Term	Very Low Short Term	Moderate Adverse Significant	Mod-Maj Adverse Significant	Moderate Beneficial Significant	Negligible Neutral Not Significant
Viewpoint VP10: Stur/73/1 Cottam 1 [APP-208] Assessment of Fixed panels	Medium	Medium Short Term	High Long Term	Medium Long Term	Very Low Short Term	Moderate Adverse Significant	Mod-Maj Adverse Significant	Moderate Beneficial Significant	Negligible Neutral Not Significant
Rationale/Conclusions/Discussion: The visual effects at this location (with the fixed panels compared to the tracker panels) will not alter the conclusions on significant effects. The value of the view is shaped by the appreciation of the contrasts in the landscape and how the road network influenced the pattern of settlement, and the scale and disposition of features and how mitigation planting can influence this in a positive way. The experience of the landscape scale benefits of the mitigation will still be appreciated, even with the fixed panels.									
Viewpoint VP11: TLFe/31/2 Cottam 1 [APP-209] Assessment of Tracker panels	Med-High	High Short Term	High Long Term	Medium Long Term	Low Short Term	Mod-Maj Adverse Significant	Major Adverse Significant	Mod-Maj Adverse Significant	Minor Adverse Not Significant
Viewpoint VP11: TLFe/31/2 Cottam 1 [APP-209] Assessment of Fixed panels	Med-High	High Short Term	High Long Term	Medium Long Term	Low Short Term	Mod-Maj Adverse Significant	Major Adverse Significant	Mod-Maj Adverse Significant	Minor Adverse Not Significant
Rationale/Conclusions/Discussion: The visual effects at this location (with the fixed panels compared to the tracker panels) will not alter the conclusions on significant effects. The value of the view is shaped by the interruption at the brideway with Thorpe Wood as a local point of interest along with the appreciation of views across the landscape. The experience of these views will still be impeded by the fixed panels.									
Viewpoint VP12: Camm/31/1 Cottam 1 [APP-210] Assessment of Tracker panels	Med-High	High Short Term	High Long Term	Medium Long Term	Low Short Term	Mod-Maj Adverse Significant	Major Adverse Significant	Moderate Beneficial Significant	Minor Adverse Not Significant

		Magnitude of Change				Significance of Effect			
		Construction	Operational		Decommissioning	Construction	Operational		Decommissioning
Visual Receptors	Sensitivity	Magnitude	Magnitude (Year 1)	Magnitude (Year 15)	Magnitude	Visual Effects	Visual Effects (after construction/ year 1). With 'primary' and 'secondary' mitigation.	Visual Effects (after Year 15). With 'primary' and 'secondary' mitigation.	Visual Effects With 'primary' and 'secondary' mitigation.
Viewpoint VP12: Camm/31/1 Cottam 1 [APP-210] Assessment of Fixed panels	Med-High	High Short Term	High Long Term	Medium Long Term	Low Short Term	Mod-Maj Adverse Significant	Major Adverse Significant	Moderate Beneficial Significant	Minor Adverse Not Significant
Rationale/Conclusions/Discussion: The visual effects at this location (with the fixed panels compared to the tracker panels) will not alter the conclusions on significant effects. The value of the view is shaped by the interruption of the bridleway with the network of farm tracks that provides a point of interest and the mitigation planting will help reinforce the 'sense of place' locally. The appreciation of this 'sense of place' and the benefits provided by the mitigation planting will not alter with fixed panels compared to tracker panels.									
Viewpoint VP13: Fleets Lane, Stow Pasture Cottam 1 [APP-211] Assessment of Tracker panels	Medium	Medium Short Term	High Long Term	Medium Long Term	Low Short Term	Moderate Adverse Significant	Mod-Maj Adverse Significant	Moderate Adverse Significant	Minor Adverse Not Significant
Viewpoint VP13: Fleets Lane, Stow Pasture Cottam 1 [APP-211] Assessment of Fixed panels	Medium	Medium Short Term	High Long Term	Medium Long Term	Low Short Term	Moderate Adverse Significant	Mod-Maj Adverse Significant	Moderate Adverse Significant	Minor Adverse Not Significant
Rationale/Conclusions/Discussion: The visual effects at this location (with the fixed panels compared to the tracker panels) will not alter the conclusions on significant effects. The value of the view is shaped by its location close to an intersection of the east-west and north-south local lane network that is marked by local settlement. The readability and 'time-depth' of the landscape as an intersection of these routes will still be impeded by the fixed panels.									
Viewpoint VP15: Squire's Bridge Cottam 1 [APP-213] Assessment of Tracker panels	Med-High	Medium Short Term	High Long Term	Medium Long Term	Low Short Term	Mod-Maj Adverse Significant	Maj-Mod Adverse Significant	Moderate Adverse Significant	Minor Adverse Not Significant
Viewpoint VP15: Squire's Bridge Cottam 1 [APP-213] Assessment of Fixed panels	Med-High	Medium Short Term	High Long Term	Medium Long Term	Low Short Term	Mod-Maj Adverse Significant	Maj-Mod Adverse Significant	Moderate Adverse Significant	Minor Adverse Not Significant
Rationale/Conclusions/Discussion: The visual effects at this location (with the fixed panels compared to the tracker panels) will not alter the conclusions on significant effects. The value of the view is shaped by the large-scale arable land use and the strong sense of identity associated with the 'all-round' visibility at this local bridge that is both intricate and textured. The ability to capture these characteristics and the strong sense of identity will still be impeded by the fixed panels.									
Viewpoint VP19: Bridge over River Till Cottam 1 [APP-217] Assessment of Tracker panels	Med-High	Medium Short Term	High Long Term	Medium Long Term	Low Short Term	Mod-Maj Adverse Significant	Maj-Mod Adverse Significant	Mod-Maj Adverse Significant	Min-Mod Adverse Not Significant
Viewpoint VP19: Bridge over River Till Cottam 1 [APP-217] Assessment of Fixed panels	Med-High	Medium Short Term	High Long Term	Medium Long Term	Low Short Term	Mod-Maj Adverse Significant	Maj-Mod Adverse Significant	Mod-Maj Adverse Significant	Min-Mod Adverse Not Significant

		Magnitude of Change				Significance of Effect			
		Construction	Operational		Decommissioning	Construction	Operational		Decommissioning
Visual Receptors	Sensitivity	Magnitude	Magnitude (Year 1)	Magnitude (Year 15)	Magnitude	Visual Effects	Visual Effects (after construction/ year 1). With 'primary' and 'secondary' mitigation.	Visual Effects (after Year 15). With 'primary' and 'secondary' mitigation.	Visual Effects With 'primary' and 'secondary' mitigation.
Rationale/Conclusions/Discussion: The visual effects at this location (with the fixed panels compared to the tracker panels) will not alter the conclusions on significant effects. The value of the view is shape by the striking differences in open and enclosed character and how the watercourses meander across the landscape and temper these contrasts. The ability to capture these contrasts and the importance of the River Till at this 'node' will still be impeded by the fixed panels.									
Viewpoint VP21: Stow/83/1 Cottam 1 [APP-219] Assessment of Tracker panels	Med-High	Medium Short Term	High Long Term	Low Long Term	Very Low Short Term	Mod-Maj Adverse Significant	Maj-Mod Adverse Significant	Minor Beneficial Not Significant	Negligible Neutral Not Significant
Viewpoint VP21: Stow/83/1 Cottam 1 [APP-219] Assessment of Fixed panels	Med-High	Medium Short Term	High Long Term	Low Long Term	Very Low Short Term	Mod-Maj Adverse Significant	Maj-Mod Adverse Significant	Minor Beneficial Not Significant	Negligible Neutral Not Significant
Rationale/Conclusions/Discussion: The visual effects at this location (with the fixed panels compared to the tracker panels) will not alter the conclusions on significant effects. The value of the view is shaped by the distinctive character of the woodlands, their importance in defining the pattern of the landscape and the ability of the mitigation planting to build on this. The appreciation of this woodland and the mitigation planting in improving this homogenous landscape will not alter.									
Viewpoint VP23: Ingh/27/5 and Ingham Road Cottam 1 [APP-221] Assessment of Tracker panels	High-Med	Low Short Term	Medium Long Term	Medium Long Term	Very Low Short Term	Min-Mod Adverse Not Significant	Moderate Adverse Significant	Moderate Beneficial Significant	Negligible Neutral Not Significant
Viewpoint VP23: Ingh/27/5 and Ingham Road Cottam 1 [APP-221] Assessment of Fixed panels	High-Med	Low Short Term	Medium Long Term	Medium Long Term	Very Low Short Term	Min-Mod Adverse Not Significant	Moderate Adverse Significant	Moderate Beneficial Significant	Negligible Neutral Not Significant
Rationale/Conclusions/Discussion: The visual effects at this location (with the fixed panels compared to the tracker panels) will not alter the conclusions on significant effects. The value of the view is shaped by the strong appreciation of the skyline, the interplay with distant woodlands and the ability of the mitigation planting to build upon this especially in defining the watercourses. The appreciation of the skyline, existing woodlands and new planting along the watercourses will not alter.									
Viewpoint VP32: Fill/86/1 Cottam 1 [APP-230] Assessment of Tracker panels	Med-High	High Short Term	High Long Term	Medium Long Term	Very Low Short Term	Mod-Maj Adverse Significant	Major Adverse Significant	Moderate Beneficial Significant	Negligible Neutral Not Significant
Viewpoint VP32: Fill/86/1 Cottam 1 [APP-230] Assessment of Fixed panels	Med-High	High Short Term	High Long Term	Medium Long Term	Very Low Short Term	Mod-Maj Adverse Significant	Major Adverse Significant	Moderate Beneficial Significant	Negligible Neutral Not Significant
Rationale/Conclusions/Discussion: The visual effects at this location (with the fixed panels compared to the tracker panels) will not alter the conclusions on significant effects. The value of the view is shaped by the geometric features of a planned landscape, the modern field systems and the ability of the mitigation planting to build upon this simple palette of land use. The appreciation of the planned landscape and the new planting that builds on its key features will not alter.									
Viewpoint VP33: Fill/86/1 off Willingham Road Cottam 1 [APP-231] Assessment of Tracker panels	Med-High	Low Short Term	Medium Long Term	Low Long Term	Very Low Short Term	Min-Mod Adverse Not Significant	Moderate Adverse Significant	Minor Beneficial Not Significant	Negligible Neutral Not Significant

		Magnitude of Change				Significance of Effect			
		Construction	Operational		Decommissioning	Construction	Operational		Decommissioning
Visual Receptors	Sensitivity	Magnitude	Magnitude (Year 1)	Magnitude (Year 15)	Magnitude	Visual Effects	Visual Effects (after construction/ year 1). With 'primary' and 'secondary' mitigation.	Visual Effects (after Year 15). With 'primary' and 'secondary' mitigation.	Visual Effects With 'primary' and 'secondary' mitigation.
Viewpoint VP33: Fill/86/1 off Willingham Road Cottam 1 [APP-231] Assessment of Fixed panels	Med-High	Low Short Term	Medium Long Term	Low Long Term	Very Low Short Term	Min-Mod Adverse Not Significant	Moderate Adverse Significant	Minor Beneficial Not Significant	Negligible Neutral Not Significant
Rationale/Conclusions/Discussion: The visual effects at this location (with the fixed panels compared to the tracker panels) will not alter the conclusions on significant effects. The value of the view is shaped by Willingham Road that provides a sense of escapism and inspiration and the ability of the mitigation planting to build upon this in the context of Hare's Wood and Fox Covert. The appreciation of Willingham Road and the new planting to build on these key features will not alter.									
Viewpoint VP35: Junction of Fill/85/1, Fill/85/2 and Fill/767/1 Cottam 1 [APP-233] Assessment of Tracker panels	Med-High	Low Short Term	Medium Long Term	Low Long Term	Very Low Short Term	Minor Adverse Not Significant	Moderate Adverse Significant	Minor Beneficial Not Significant	Negligible Neutral Not Significant
Viewpoint VP35: Junction of Fill/85/1, Fill/85/2 and Fill/767/1 Cottam 1 [APP-233] Assessment of Fixed panels	Med-High	Low Short Term	Medium Long Term	Low Long Term	Very Low Short Term	Minor Adverse Not Significant	Moderate Adverse Significant	Minor Beneficial Not Significant	Negligible Neutral Not Significant
Rationale/Conclusions/Discussion: The visual effects at this location (with the fixed panels compared to the tracker panels) will not alter the conclusions on significant effects. The value of the view is shaped by the bridleway network as a popular retreat from the local roads with good levels of tranquillity and isolation, and the mitigation planting will build on this. The appreciation of the 'all round' visibility from this location and the new planting in the foreground will not alter.									
Viewpoint VP36: Fill/767/1 Cottam 1 [APP-234] Assessment of Tracker panels	Med-High	Medium Short Term	High-Med Long Term	Low Long Term	Very Low Short Term	Mod-Maj Adverse Significant	Moderate Adverse Significant	Minor Beneficial Not Significant	Negligible Neutral Not Significant
Viewpoint VP36: Fill/767/1 Cottam 1 [APP-234] Assessment of Fixed panels	Med-High	Medium Short Term	High-Med Long Term	Low Long Term	Very Low Short Term	Mod-Maj Adverse Significant	Moderate Adverse Significant	Minor Beneficial Not Significant	Negligible Neutral Not Significant
Rationale/Conclusions/Discussion: The visual effects at this location (with the fixed panels compared to the tracker panels) will not alter the conclusions on significant effects. The value of the view is shaped by the bridleway network as a popular retreat from the local roads with good levels of tranquillity and isolation and the mitigation planting will build on this. The appreciation of the 'all round' visibility from this location and the new planting in the foreground, especially to the west will not alter.									
Viewpoint VP37: Junction of Gypsy Lane and Willingham Road Cottam 1 [APP-235] Assessment of Tracker panels	Medium	Medium Short Term	High Long Term	Low Long Term	Very Low Short Term	Moderate Adverse Significant	Mod-Maj Adverse Significant	Minor Beneficial Not Significant	Negligible Neutral Not Significant
Viewpoint VP37: Junction of Gypsy Lane and Willingham Road Cottam 1 [APP-235] Assessment of Fixed panels	Medium	Medium Short Term	High Long Term	Low Long Term	Very Low Short Term	Moderate Adverse Significant	Mod-Maj Adverse Significant	Minor Beneficial Not Significant	Negligible Neutral Not Significant
Rationale/Conclusions/Discussion: The visual effects at this location (with the fixed panels compared to the tracker panels) will not alter the conclusions on significant effects. The value of the view is shaped by the east west local network of local lanes and the 's' bends that add to the sense of place where the roadside hedgerows frame views of this journey. The appreciation of the 'S' bend and the contribution of roadside hedgerows especially to the west will not alter.									

		Magnitude of Change				Significance of Effect			
		Construction	Operational		Decommissioning	Construction	Operational		Decommissioning
Visual Receptors	Sensitivity	Magnitude	Magnitude (Year 1)	Magnitude (Year 15)	Magnitude	Visual Effects	Visual Effects (after construction/ year 1). With 'primary' and 'secondary' mitigation.	Visual Effects (after Year 15). With 'primary' and 'secondary' mitigation.	Visual Effects With 'primary' and 'secondary' mitigation.
Viewpoint VP39: Junction of Cot Garth Lane and Stone Pit Lane Cottam 1 [APP-237] Assessment of Tracker panels	Medium	Medium-High Short Term	High Long Term	Medium-High Long Term	Low Short Term	Mod-Maj Adverse Significant	Major Adverse Significant	Mod-Maj Adverse Significant	Minor Adverse Not Significant
Viewpoint VP39: Junction of Cot Garth Lane and Stone Pit Lane Cottam 1 [APP-237] Assessment of Fixed panels	Medium	Medium-High Short Term	High Long Term	Medium-High Long Term	Low Short Term	Mod-Maj Adverse Significant	Major Adverse Significant	Mod-Maj Adverse Significant	Minor Adverse Not Significant
Rationale/Conclusions/Discussion: The visual effects at this location (with the fixed panels compared to the tracker panels) will not alter the conclusions on significant effects. The value of the view is shaped by junction of the predominantly quiet and rural local lanes and the strong hedgerows to each side that provide a 'sense of place'. The ability to capture these characteristics and focus on the junction of these two lanes will still be impeded by the new panels.									
Viewpoint VP49: East Lane Cottam 2 [APP-247] Assessment of Tracker panels	Medium	Medium Short Term	High Long Term	Medium Long Term	Very Low Short Term	Moderate Adverse Significant	Maj-Mod Adverse Significant	Moderate Beneficial Significant	Negligible Neutral Not Significant
Viewpoint VP49: East Lane Cottam 2 [APP-247] Assessment of Fixed panels	Medium	Medium Short Term	High Long Term	Medium Long Term	Very Low Short Term	Moderate Adverse Significant	Maj-Mod Adverse Significant	Moderate Beneficial Significant	Negligible Neutral Not Significant
Rationale/Conclusions/Discussion: The visual effects at this location (with the fixed panels compared to the tracker panels) will not alter the conclusions on significant effects. The value of the view is shaped by an area of farmland where hedgerow quality makes a limited contribution since they are close-cut. Coupled with straight roads, this diminishes the 'sense of place', but the new mitigation planting will build on this. The ability to capture the new improved hedgerows as improving the denuded and fragmented landscape will not alter.									
Viewpoint VP56: Pilh/20/1 Cottam 3b [APP-254] Assessment of Tracker panels	High	Medium Short Term	High Long Term	Medium Long Term	Very Low Short Term	Mod-Maj Adverse Significant	Major Adverse Significant	Moderate Beneficial Significant	Negligible Neutral Not Significant
Viewpoint VP56: Pilh/20/1 Cottam 3b [APP-254] Assessment of Fixed panels	High	Medium Short Term	High Long Term	Medium Long Term	Very Low Short Term	Mod-Maj Adverse Significant	Major Adverse Significant	Moderate Beneficial Significant	Negligible Neutral Not Significant
Rationale/Conclusions/Discussion: The visual effects at this location (with the fixed panels compared to the tracker panels) will not alter the conclusions on significant effects. The value of the views is shaped by this footpath which follows a local lane that is tranquil and enclosed with strong hedgerows and mature trees and the new mitigation planting will build on this. The ability to capture strong hedgerows, mature trees and new mitigation planting as improving this enclosure will not alter.									
Viewpoint VP58: Junction of Pilh/20/1 and Bonsdale Lane Cottam 3b [APP-256] Assessment of Tracker panels	Med-High	Medium Short Term	High Long Term	Medium Long Term	Very Low Short Term	Mod-Maj Adverse Significant	Major Adverse Significant	Mod-Maj Beneficial Significant	Negligible Adverse Not Significant
Viewpoint VP58: Junction of Pilh/20/1 and Bonsdale Lane Cottam 3b [APP-256] Assessment of Fixed panels	Med-High	Medium Short Term	High Long Term	Medium Long Term	Very Low Short Term	Mod-Maj Adverse Significant	Major Adverse Significant	Mod-Maj Beneficial Significant	Negligible Adverse Not Significant

		Magnitude of Change				Significance of Effect			
		Construction	Operational		Decommissioning	Construction	Operational		Decommissioning
Visual Receptors	Sensitivity	Magnitude	Magnitude (Year 1)	Magnitude (Year 15)	Magnitude	Visual Effects	Visual Effects (after construction/ year 1). With 'primary' and 'secondary' mitigation.	Visual Effects (after Year 15). With 'primary' and 'secondary' mitigation.	Visual Effects With 'primary' and 'secondary' mitigation.
Rationale/Conclusions/Discussion: The visual effects at this location (with the fixed panels compared to the tracker panels) will not alter the conclusions on significant effects. The value of the view is shaped by the north south local road network at the junction with this footpath which defines the 'sense of place'. The new mitigation planting will build on this as linking the woodland blocks and this will not alter.									
Viewpoint VP59: Blyton Level Crossing Cottam 3b [APP-257] Assessment of Tracker panels	Medium	Medium Short Term	High Long Term	Medium Long Term	Low Short Term	Moderate Adverse Significant	Mod-Maj Adverse Significant	Moderate Adverse Significant	Minor Adverse Not Significant
Viewpoint VP59: Blyton Level Crossing Cottam 3b [APP-257] Assessment of Fixed panels	Medium	Medium Short Term	High Long Term	Medium Long Term	Low Short Term	Moderate Adverse Significant	Mod-Maj Adverse Significant	Moderate Adverse Significant	Minor Adverse Not Significant
Rationale/Conclusions/Discussion: The visual effects at this location (with the fixed panels compared to the tracker panels) will not alter the conclusions on significant effects. The value of the view is shaped by the presence of the mainline railway and Blyton level crossing at a junction with the north-south road network. The ability to capture the railway and level crossing at this 'node' will still be impeded by the fixed panels.									
Viewpoint VP60: B1025 (Kirton Road) Cottam 3a [APP-258] Assessment of Tracker panels	Medium	High Short Term	High Long Term	Medium Long Term	Low Short Term	Mod-Maj Adverse Significant	Mod-Maj Adverse Significant	Moderate Adverse Significant	Minor Adverse Not Significant
Viewpoint VP60: B1025 (Kirton Road) Cottam 3a [APP-258] Assessment of Fixed panels	Medium	High Short Term	High Long Term	Medium Long Term	Low Short Term	Mod-Maj Adverse Significant	Mod-Maj Adverse Significant	Moderate Adverse Significant	Minor Adverse Not Significant
Rationale/Conclusions/Discussion: The visual effects at this location (with the fixed panels compared to the tracker panels) will not alter the conclusions on significant effects. The value of the view is shaped by the airbase that is prominent along Kirton Road. The airbase makes a limited contribution to the visual quality of the landscape and the landscape setting of Blyton. The ability of the airbase to contribute to the visual quality of the landscape at this location will still be impeded by the fixed panels.									
Viewpoint VP61: B1025 (Kirton Road) Cottam 3a [APP-259] Assessment of Tracker panels	Medium	Medium Short Term	High Long Term	Low Long Term	Very Low Short Term	Moderate Adverse Significant	Mod-Maj Adverse Significant	Minor Beneficial Not Significant	Negligible Neutral Not Significant
Viewpoint VP61: B1025 (Kirton Road) Cottam 3a [APP-259] Assessment of Fixed panels	Medium	Medium Short Term	High Long Term	Low Long Term	Very Low Short Term	Moderate Adverse Significant	Mod-Maj Adverse Significant	Minor Beneficial Not Significant	Negligible Neutral Not Significant
Rationale/Conclusions/Discussion: The visual effects at this location (with the fixed panels compared to the tracker panels) will not alter the conclusions on significant effects. The value of the view is shaped by the airbase that is prominent along Kirton Road. The airbase makes a limited contribution to the visual quality of the landscape and the mitigation planting will build on this by diminishing its presence at this location. The ability of the airbase to contribute to the visual quality of the landscape at this location with the mitigation planting will not alter.									

		Magnitude of Change				Significance of Effect			
		Construction	Operational		Decommissioning	Construction	Operational		Decommissioning
Visual Receptors	Sensitivity	Magnitude	Magnitude (Year 1)	Magnitude (Year 15)	Magnitude	Visual Effects	Visual Effects (after construction/ year 1). With 'primary' and 'secondary' mitigation.	Visual Effects (after Year 15). With 'primary' and 'secondary' mitigation.	Visual Effects With 'primary' and 'secondary' mitigation.
Viewpoint VP62: B1025 (Kirton Road) Cottam 3a [APP-260] Assessment of Tracker panels	Medium	Medium Short Term	Low Long Term	Low Long Term	Very Low Short Term	Moderate Adverse Significant	Min-Neg Adverse Not Significant	Min-Neg Adverse Not Significant	Negligible Neutral Not Significant
Viewpoint VP62: B1025 (Kirton Road) Cottam 3a [APP-260] Assessment of Fixed panels	Medium	Medium Short Term	Low Long Term	Low Long Term	Very Low Short Term	Moderate Adverse Significant	Min-Neg Adverse Not Significant	Min-Neg Adverse Not Significant	Negligible Neutral Not Significant
Rationale/Conclusions/Discussion: The visual effects at this location (with the fixed panels compared to the tracker panels) will not alter the conclusions on significant effects. The value of the view is shaped by Kirton Road at its approach and gateway to the settlement and the new mitigation planting will build on this. The ability to appreciate Kirton Road as a gateway to settlement with the mitigation planting will not alter.									
Viewpoint VP63: A159 (Laughton Road) Cottam 3a [APP-261] Assessment of Tracker panels	Medium	Medium Short Term	High Long Term	Medium Long Term	Very Low Short Term	Moderate Adverse Significant	Major Adverse Significant	Moderate Beneficial Significant	Negligible Neutral Not Significant
Viewpoint VP63: A159 (Laughton Road) Cottam 3a [APP-261] Assessment of Fixed panels	Medium	Medium Short Term	High Long Term	Medium Long Term	Very Low Short Term	Moderate Adverse Significant	Major Adverse Significant	Moderate Beneficial Significant	Negligible Neutral Not Significant
Rationale/Conclusions/Discussion: The visual effects at this location (with the fixed panels compared to the tracker panels) will not alter the conclusions on significant effects. The value of the view is shaped by Laughton Road at its approach and gateway to the settlement and the AGLV and the new mitigation planting will build on this. The ability to appreciate Laughton Road as a gateway to settlement with the mitigation planting will not alter.									
LCC-C-D Blackthorn Lane Cottam 1 [APP-269] Assessment of Tracker panels	Medium	Medium Short Term	Medium Long Term	Medium Long Term	Very Low Short Term	Moderate Adverse Significant	Moderate Adverse Significant	Moderate Beneficial Significant	Negligible Neutral Not Significant
LCC-C-D Blackthorn Lane Cottam 1 [APP-269] Assessment of Fixed panels	Medium	Medium Short Term	Medium Long Term	Medium Long Term	Very Low Short Term	Moderate Adverse Significant	Moderate Adverse Significant	Moderate Beneficial Significant	Negligible Neutral Not Significant
Rationale/Conclusions/Discussion: The visual effects at this location (with the fixed panels compared to the tracker panels) will not alter the conclusions on significant effects. The value of the view is shaped by the distinctive character of the woodlands which are local landmarks from local lanes such a Blackthorn Lane, and the new mitigation planting will build on this. The ability to appreciate the existing woodlands and the new mitigation planting will not alter.									
LCC-C-G PRoW Fill/85/2 Cottam 1 [APP-272] Assessment of Tracker panels	Med-High	Medium Short Term	High Long Term	Medium Long Term	Medium Short Term	Mod-Maj Adverse Significant	Maj-Mod Adverse Significant	Mod-Maj Adverse Significant	Moderate Adverse Significant

		Magnitude of Change				Significance of Effect			
		Construction	Operational		Decommissioning	Construction	Operational		Decommissioning
Visual Receptors	Sensitivity	Magnitude	Magnitude (Year 1)	Magnitude (Year 15)	Magnitude	Visual Effects	Visual Effects (after construction/ year 1). With 'primary' and 'secondary' mitigation.	Visual Effects (after Year 15). With 'primary' and 'secondary' mitigation.	Visual Effects With 'primary' and 'secondary' mitigation.
LCC-C-G PRoW Fill/85/2 Cottam 1 [APP-272] Assessment of Fixed panels	Med-High	Medium Short Term	High Long Term	Medium Long Term	Medium Short Term	Mod-Maj Adverse Significant	Maj-Mod Adverse Significant	Mod-Maj Adverse Significant	Moderate Adverse Significant
Rationale/Conclusions/Discussion: The visual effects at this location (with the fixed panels compared to the tracker panels) will not alter the conclusions on significant effects. The value of the view is shaped by the geometric modern landscape with a high level of visual unity, where the presence of woodland adds the significance to these views. The ability to appreciate these woodlands and unity of the landscape at this location will still be impeded by the fixed panels.									
LCC-C-H PRoW Fill/767/1 Cottam 1 [APP-273] Assessment of Tracker panels	Med-High	High Short Term	High Long Term	Medium Long Term	Low Short Term	Mod-Maj Adverse Significant	Major Adverse Significant	Moderate Adverse Significant	Minor Adverse Not Significant
LCC-C-H PRoW Fill/767/1 Cottam 1 [APP-273] Assessment of Fixed panels	Med-High	High Short Term	High Long Term	Medium Long Term	Low Short Term	Mod-Maj Adverse Significant	Major Adverse Significant	Moderate Adverse Significant	Minor Adverse Not Significant
Rationale/Conclusions/Discussion: The visual effects at this location (with the fixed panels compared to the tracker panels) will not alter the conclusions on significant effects. The value of the view is shaped by distant woodland blocks and shelterbelts that frame the horizon in the context of a geometric landscape. The ability to appreciate these woodlands and shelterbelts will still be impeded by the fixed panels.									
LCC-C-I Willingham Road Cottam 1 [APP-274] Assessment of Tracker panels	Medium	Medium Short Term	Medium Long Term	Low Long Term	Very Low Short Term	Moderate Adverse Significant	Moderate Adverse Significant	Minor Adverse Not Significant	Negligible Neutral Not Significant
LCC-C-I Willingham Road Cottam 1 [APP-274] Assessment of Fixed panels	Medium	Medium Short Term	Medium Long Term	Low Long Term	Very Low Short Term	Moderate Adverse Significant	Moderate Adverse Significant	Minor Adverse Not Significant	Negligible Neutral Not Significant
Rationale/Conclusions/Discussion: The visual effects at this location (with the fixed panels compared to the tracker panels) will not alter the conclusions on significant effects. The value of the view is shaped by the nature of the predominantly rural and sparsely settled area with dispersed farms. The ability to appreciate distant views across the open landscape towards the dispersed farms will still be impeded by the fixed panels.									
LCC-C-J Fillingham Lane Cottam 1 [APP-275] Assessment of Tracker panels	Medium	Medium Short Term	High-Medium Long Term	Medium Long Term	Low Short Term	Moderate Adverse Significant	Mod-Maj Adverse Significant	Moderate Adverse Significant	Minor Adverse Not Significant

		Magnitude of Change				Significance of Effect			
		Construction	Operational		Decommissioning	Construction	Operational		Decommissioning
Visual Receptors	Sensitivity	Magnitude	Magnitude (Year 1)	Magnitude (Year 15)	Magnitude	Visual Effects	Visual Effects (after construction/ year 1). With 'primary' and 'secondary' mitigation.	Visual Effects (after Year 15). With 'primary' and 'secondary' mitigation.	Visual Effects With 'primary' and 'secondary' mitigation.
LCC-C-J Fillingham Lane Cottam 1 [APP-275] Assessment of Fixed panels	Medium	Medium Short Term	High-Medium Long Term	Medium Long Term	Low Short Term	Moderate Adverse Significant	Mod-Maj Adverse Significant	Moderate Adverse Significant	Minor Adverse Not Significant
Rationale/Conclusions/Discussion: The visual effects at this location (with the fixed panels compared to the tracker panels) will not alter the conclusions on significant effects. The value of the view is shaped by the east west network of local lanes where features such as crossing of local watercourse provide opportunity to appreciate the landscape. The ability to appreciate the landscape at these watercourses will still be impeded by the fixed panels.									
LCC-C-K Fillingham Lane Cottam 1 [APP-276] Assessment of Tracker panels	Med-High	Low Short Term	Medium Long Term	Medium Long Term	Low Short Term	Minor Adverse Not Significant	Moderate Adverse Significant	Minor Adverse Not Significant	Minor Adverse Not Significant
LCC-C-K Fillingham Lane Cottam 1 [APP-276] Assessment of Fixed panels	Med-High	Low Short Term	Medium Long Term	Medium Long Term	Low Short Term	Minor Adverse Not Significant	Moderate Adverse Significant	Minor Adverse Not Significant	Minor Adverse Not Significant
Rationale/Conclusions/Discussion: The visual effects at this location (with the fixed panels compared to the tracker panels) will not alter the conclusions on significant effects. The value of the view is shaped by the area being extensively farmed where the presence of small-scale field systems helps enhance the 'sense of place' with mature tree cover and the new mitigation planting will build on this. The ability to appreciate the intimacy of landscape associated with this watercourse crossing will still be impeded by the fixed panels.									
LCC-C-T Kirton Road Cottam 3a [APP-285] Assessment of Tracker panels	Medium	Medium Short Term	High Long Term	Medium Long Term	Low Short Term	Moderate Adverse Significant	Mod-Maj Adverse Significant	Moderate Adverse Significant	Minor Adverse Not Significant
LCC-C-T Kirton Road Cottam 3a [APP-285] Assessment of Fixed panels	Medium	Medium Short Term	High Long Term	Medium Long Term	Low Short Term	Moderate Adverse Significant	Mod-Maj Adverse Significant	Moderate Adverse Significant	Minor Adverse Not Significant
Rationale/Conclusions/Discussion: The visual effects at this location (with the fixed panels compared to the tracker panels) will not alter the conclusions on significant effects. The value of the view is shaped by the strong hedgerow network that is prominent to both sides of Kirton Road and the influences of the settlement edge. The ability to appreciate these hedgerows and their relationship with Kirton Road will still be impeded by the fixed panels.									
Residential Receptors									
Residential Receptor R33: The Cottage Cottam 2 Assessment of Tracker panels	High	Medium Short Term	Medium Long Term	Low Long Term	Low Short Term	Mod-Maj Adverse Significant	Mod-Maj Adverse Significant	Minor-Moderate Neutral Not Significant	Minor Neutral Not Significant

		Magnitude of Change				Significance of Effect			
		Construction	Operational		Decommissioning	Construction	Operational		Decommissioning
Visual Receptors	Sensitivity	Magnitude	Magnitude (Year 1)	Magnitude (Year 15)	Magnitude	Visual Effects	Visual Effects (after construction/ year 1). With 'primary' and 'secondary' mitigation.	Visual Effects (after Year 15). With 'primary' and 'secondary' mitigation.	Visual Effects With 'primary' and 'secondary' mitigation.
Residential Receptor R33: The Cottage Cottam 2 Assessment of Fixed panels	High	Medium Short Term	Medium Long Term	Low Long Term	Low Short Term	Mod-Maj Adverse Significant	Mod-Maj Adverse Significant	Minor-Moderate Neutral Not Significant	Minor Neutral Not Significant
Rationale/Conclusions/Discussion: The visual effects at this location (with the fixed panels compared to the tracker panels) will not alter the conclusions on significant effects. Overall, the value of the views from the property potentially arise from the first floor principle south facing elevation that captures the landscape setting of Springthorpe and Heapham with Corringham Grange Farm in the foreground. The ability to appreciate these views towards the south will not alter with the fixed panels.									
Residential Receptor R36: Corringham Grange Farm Cottam 2 Assessment of Tracker panels	High	Medium Short Term	Medium Long Term	Low Long Term	Low Short Term	Mod-Maj Adverse Significant	Mod-Maj Adverse Significant	Min-Mod Adverse Not Significant	Minor Neutral Not Significant
Residential Receptor R36: Corringham Grange Farm Cottam 2 Assessment of Fixed panels	High	Medium Short Term	Medium Long Term	Low Long Term	Low Short Term	Mod-Maj Adverse Significant	Mod-Maj Adverse Significant	Min-Mod Adverse Not Significant	Minor Neutral Not Significant
Rationale/Conclusions/Discussion: The visual effects at this location (with the fixed panels compared to the tracker panels) will not alter the conclusions on significant effects. Overall, the value of the views from the property potentially arise from the first floor principle south facing elevation that captures views towards Springthorpe, Heapham and potentially Corringham Windmill. The ability to appreciate these views towards the south will not alter with the fixed panels.									
Residential Receptor R61: Greystones Farm Cottam 1 Assessment of Tracker panels	High	Medium Short Term	Medium Long Term	Low Long Term	Low Short Term	Mod-Maj Adverse Significant	Mod-Maj Adverse Significant	Minor-Moderate Neutral Not Significant	Minor Neutral Not Significant
Residential Receptor R61: Greystones Farm Cottam 1 Assessment of Fixed panels	High	Medium Short Term	Medium Long Term	Low Long Term	Low Short Term	Mod-Maj Adverse Significant	Mod-Maj Adverse Significant	Minor-Moderate Neutral Not Significant	Minor Neutral Not Significant
Rationale/Conclusions/Discussion: The visual effects at this location (with the fixed panels compared to the tracker panels) will not alter the conclusions on significant effects. Overall, the value of the views from the property potentially arise from the first floor principle south facing elevation that captures views across an open arable field. The ability to appreciate these views towards the south will not alter with the fixed panels.									
Residential Receptor R62: Turpin Farm Cottam 1 Assessment of Tracker panels	High	Medium Short Term	Medium Long Term	Low Long Term	Low Short Term	Mod-Maj Adverse Significant	Mod-Maj Adverse Significant	Minor-Moderate Neutral Not Significant	Minor Neutral Not Significant
Residential Receptor R62: Turpin Farm Cottam 1 Assessment of Fixed panels	High	Medium Short Term	Medium Long Term	Low Long Term	Low Short Term	Mod-Maj Adverse Significant	Mod-Maj Adverse Significant	Minor-Moderate Neutral Not Significant	Minor Neutral Not Significant

		Magnitude of Change				Significance of Effect			
		Construction	Operational		Decommissioning	Construction	Operational		Decommissioning
Visual Receptors	Sensitivity	Magnitude	Magnitude (Year 1)	Magnitude (Year 15)	Magnitude	Visual Effects	Visual Effects (after construction/ year 1). With 'primary' and 'secondary' mitigation.	Visual Effects (after Year 15). With 'primary' and 'secondary' mitigation.	Visual Effects With 'primary' and 'secondary' mitigation.
Rationale/Conclusions/Discussion: The visual effects at this location (with the fixed panels compared to the tracker panels) will not alter the conclusions on significant effects. Overall, the value of the views from the property potentially arise from the first floor windows of the two storey dwelling towards the east over an arable landscape. The ability to appreciate these views towards the east will not alter with the fixed panels.									
Residential Receptor R63A: North Farm Cottam 1 Assessment of Tracker panels	High	Medium Short Term	Medium Long Term	Low Long Term	Low Short Term	Mod-Maj- Adverse Significant	Mod-Maj- Adverse Significant	Min-Mod Adverse Not Significant	Minor Neutral Not Significant
Residential Receptor R63A: North Farm Cottam 1 Assessment of Fixed panels	High	Medium Short Term	Medium Long Term	Low Long Term	Low Short Term	Mod-Maj- Adverse Significant	Mod-Maj- Adverse Significant	Min-Mod Adverse Not Significant	Minor Neutral Not Significant
Rationale/Conclusions/Discussion: The visual effects at this location (with the fixed panels compared to the tracker panels) will not alter the conclusions on significant effects. Overall, the value of the views from the property potentially arise from the first floor windows of the principle elevation looking south over the agricultural landscape. The ability to appreciate these views towards the south will not alter with the fixed panels.									
Residential Receptor R63B: Side Farm Cottam 1 Assessment of Tracker panels	High	Medium Short Term	Medium Long Term	Low Long Term	Low Short Term	Mod-Maj Adverse Significant	Mod-Maj Adverse Significant	Minor-Moderate Neutral Not Significant	Minor Neutral Not Significant
Residential Receptor R63B: Side Farm Cottam 1 Assessment of Fixed panels	High	Medium Short Term	Medium Long Term	Low Long Term	Low Short Term	Mod-Maj Adverse Significant	Mod-Maj Adverse Significant	Minor-Moderate Neutral Not Significant	Minor Neutral Not Significant
Rationale/Conclusions/Discussion: The visual effects at this location (with the fixed panels compared to the tracker panels) will not alter the conclusions on significant effects. Overall, the value of the views from the property potentially arise from the first floor windows looking south over an agricultural landscape, since the north elevation is influenced by the presence of a large-scale agricultural building. The ability to appreciate these views towards the south will not alter with the fixed panels.									
Residential Receptor R67: Moor Farm Cottam 1 Assessment of Tracker panels	High	Medium Short Term	Medium Long Term	Low Long Term	Low Short Term	Mod-Maj Adverse Significant	Mod-Maj Adverse Significant	Minor-Moderate Neutral Not Significant	Minor Neutral Not Significant
Residential Receptor R67: Moor Farm Cottam 1 Assessment of Fixed panels	High	Medium Short Term	Medium Long Term	Low Long Term	Low Short Term	Mod-Maj Adverse Significant	Mod-Maj Adverse Significant	Minor-Moderate Neutral Not Significant	Minor Neutral Not Significant
Rationale/Conclusions/Discussion: The visual effects at this location (with the fixed panels compared to the tracker panels) will not alter the conclusions on significant effects. Overall, the value of the views from the property potentially arise from first floor windows looking north and west over the surrounding landscape, since the views towards the south and east are influenced by large-scale agricultural buildings. The ability to appreciate these views towards the north and west will not alter with the fixed panels.									

		Magnitude of Change				Significance of Effect			
		Construction	Operational		Decommissioning	Construction	Operational		Decommissioning
Visual Receptors	Sensitivity	Magnitude	Magnitude (Year 1)	Magnitude (Year 15)	Magnitude	Visual Effects	Visual Effects (after construction/ year 1). With 'primary' and 'secondary' mitigation.	Visual Effects (after Year 15). With 'primary' and 'secondary' mitigation.	Visual Effects With 'primary' and 'secondary' mitigation.
Transport Receptors									
Transport Receptor: T016/B1205 Kirton Road Cottam 3a Assessment of Tracker panels	Medium	Medium Short Term	Medium Long Term	Medium Long Term	Low Short Term	Moderate Adverse Significant	Moderate Adverse Significant	Moderate Adverse Significant	Minor Neutral Not Significant
Transport Receptor: T016/B1205 Kirton Road Cottam 3a Assessment of Fixed panels	Medium	Medium Short Term	Medium Long Term	Medium Long Term	Low Short Term	Moderate Adverse Significant	Moderate Adverse Significant	Moderate Adverse Significant	Minor Neutral Not Significant
Rationale/Conclusions/Discussion: The visual effects at this location (with the fixed panels compared to the tracker panels) will not alter the conclusions on significant effects. The value of the views from this route is shaped by the airbase that is prominent along this western section of Kirton Road. The airbase makes a limited contribution to the visual quality of the landscape and the mitigation planting will not be openly visible along this section of the route either. The ability to appreciate the airbase and any the mitigation planting will still be impeded with the fixed panels.									
Transport Receptor: T019/Kirton Road, Blyton Cottam 3a Assessment of Tracker panels	Medium	Medium Short Term	High Long Term	Medium Long Term	Low Short Term	Moderate Adverse Significant	Mod-Maj Adverse Significant	Moderate Neutral Significant	Minor Neutral Not Significant
Transport Receptor: T019/Kirton Road, Blyton Cottam 3a Assessment of Fixed panels	Medium	Medium Short Term	High Long Term	Medium Long Term	Low Short Term	Moderate Adverse Significant	Mod-Maj Adverse Significant	Moderate Neutral Significant	Minor Neutral Not Significant
Rationale/Conclusions/Discussion: The visual effects at this location (with the fixed panels compared to the tracker panels) will not alter the conclusions on significant effects. The value of the views is shaped by the airbase that is prominent along this section of Kirton Road. The airbase makes a limited contribution to the visual quality of the landscape and the landscape setting of Blyton at this location. The ability of the airbase to contribute to the visual quality of the landscape at this location will still be impeded by the fixed panels.									
Transport Receptor: T021/Bonsdale Lane, Blyton Cottam 3b Assessment of Tracker panels	Medium	Medium Short Term	High Long Term	Medium Long Term	Low Short Term	Moderate Adverse Significant	Mod-Maj Adverse Significant	Moderate Adverse Significant	Minor Neutral Not Significant
Transport Receptor: T021/Bonsdale Lane, Blyton Cottam 3b Assessment of Fixed panels	Medium	Medium Short Term	High Long Term	Medium Long Term	Low Short Term	Moderate Adverse Significant	Mod-Maj Adverse Significant	Moderate Adverse Significant	Minor Neutral Not Significant
Rationale/Conclusions/Discussion: The visual effects at this location (with the fixed panels compared to the tracker panels) will not alter the conclusions on significant effects. The value of the views along this section of the route are shaped by the north south local road network at the junction with the footpath network leading to Pilham which defines the 'sense of place'. The new mitigation planting will build on this location as linking the woodland blocks and this will still be impeded with the fixed panels.									

		Magnitude of Change				Significance of Effect			
		Construction	Operational		Decommissioning	Construction	Operational		Decommissioning
Visual Receptors	Sensitivity	Magnitude	Magnitude (Year 1)	Magnitude (Year 15)	Magnitude	Visual Effects	Visual Effects (after construction/ year 1). With 'primary' and 'secondary' mitigation.	Visual Effects (after Year 15). With 'primary' and 'secondary' mitigation.	Visual Effects With 'primary' and 'secondary' mitigation.
Transport Receptor: T040/Access to Corringham Grange Cottam 2 Assessment of Tracker panels	Medium	Medium Short Term	High Long Term	Medium Long Term	Low Short Term	Moderate Adverse Significant	Mod-Maj Adverse Significant	Moderate Adverse Significant	Minor Neutral Not Significant
Transport Receptor: T040/Access to Corringham Grange Cottam 2 Assessment of Fixed panels	Medium	Medium Short Term	High Long Term	Medium Long Term	Low Short Term	Moderate Adverse Significant	Mod-Maj Adverse Significant	Moderate Adverse Significant	Minor Neutral Not Significant
Rationale/Conclusions/Discussion: The visual effects at this location (with the fixed panels compared to the tracker panels) will not alter the conclusions on significant effects. The value of the views along this section of the route are shaped by an area of farmland with isolated farm dwellings where hedgerow quality makes a limited contribution since they are close-cut. Coupled with the straight road and large-scale agricultural buildings, this diminishes the 'sense of place', but the new mitigation planting will build on this. The ability to capture the new improved hedgerows in this context of isolated farm dwellings will still be impeded with the fixed panels.									
Transport Receptor: T045/East Lane Cottam 2 Assessment of Tracker panels	Medium	Medium Short Term	High Long Term	Medium Long Term	Low Short Term	Moderate Adverse Significant	Mod-Maj Adverse Significant	Moderate Adverse Significant	Minor Neutral Not Significant
Transport Receptor: T045/East Lane Cottam 2 Assessment of Fixed panels	Medium	Medium Short Term	High Long Term	Medium Long Term	Low Short Term	Moderate Adverse Significant	Mod-Maj Adverse Significant	Moderate Adverse Significant	Minor Neutral Not Significant
Rationale/Conclusions/Discussion: The visual effects at this location (with the fixed panels compared to the tracker panels) will not alter the conclusions on significant effects. The value of the views along this section of the route are shaped by an area of farmland with isolated farm dwellings where hedgerow quality makes a limited contribution since they are close-cut. Coupled with the straight road and large-scale agricultural buildings, this diminishes the 'sense of place', but the new mitigation planting will build on this. The ability to capture the new improved hedgerows in this context of isolated farm dwellings will still be impeded with the fixed panels.									
Transport Receptor: T072/Access to Fillingham Grange Cottam 1 Assessment of Tracker panels	Medium	Medium Short Term	High Long Term	Medium Long Term	Low Short Term	Moderate Adverse Significant	Mod-Maj Adverse Significant	Moderate Neutral Significant	Minor Neutral Not Significant
Transport Receptor: T072/Access to Fillingham Grange Cottam 1 Assessment of Fixed panels	Medium	Medium Short Term	High Long Term	Medium Long Term	Low Short Term	Moderate Adverse Significant	Mod-Maj Adverse Significant	Moderate Neutral Significant	Minor Neutral Not Significant
Rationale/Conclusions/Discussion: The visual effects at this location (with the fixed panels compared to the tracker panels) will not alter the conclusions on significant effects. The value of the views along this route are shaped by the transition of scale, ranging from enclosed parts in the south to clear open views at the northern section east to west. The ability of the route to capture these notable east west views will still be impeded with the fixed panels.									
Transport Receptor: T074/Willingham Road Cottam 1 Assessment of Tracker panels	Medium	Medium Short Term	High Long Term	Medium Long Term	Low Short Term	Moderate Adverse Significant	Mod-Maj Adverse Significant	Moderate Neutral Significant	Minor Neutral Not Significant

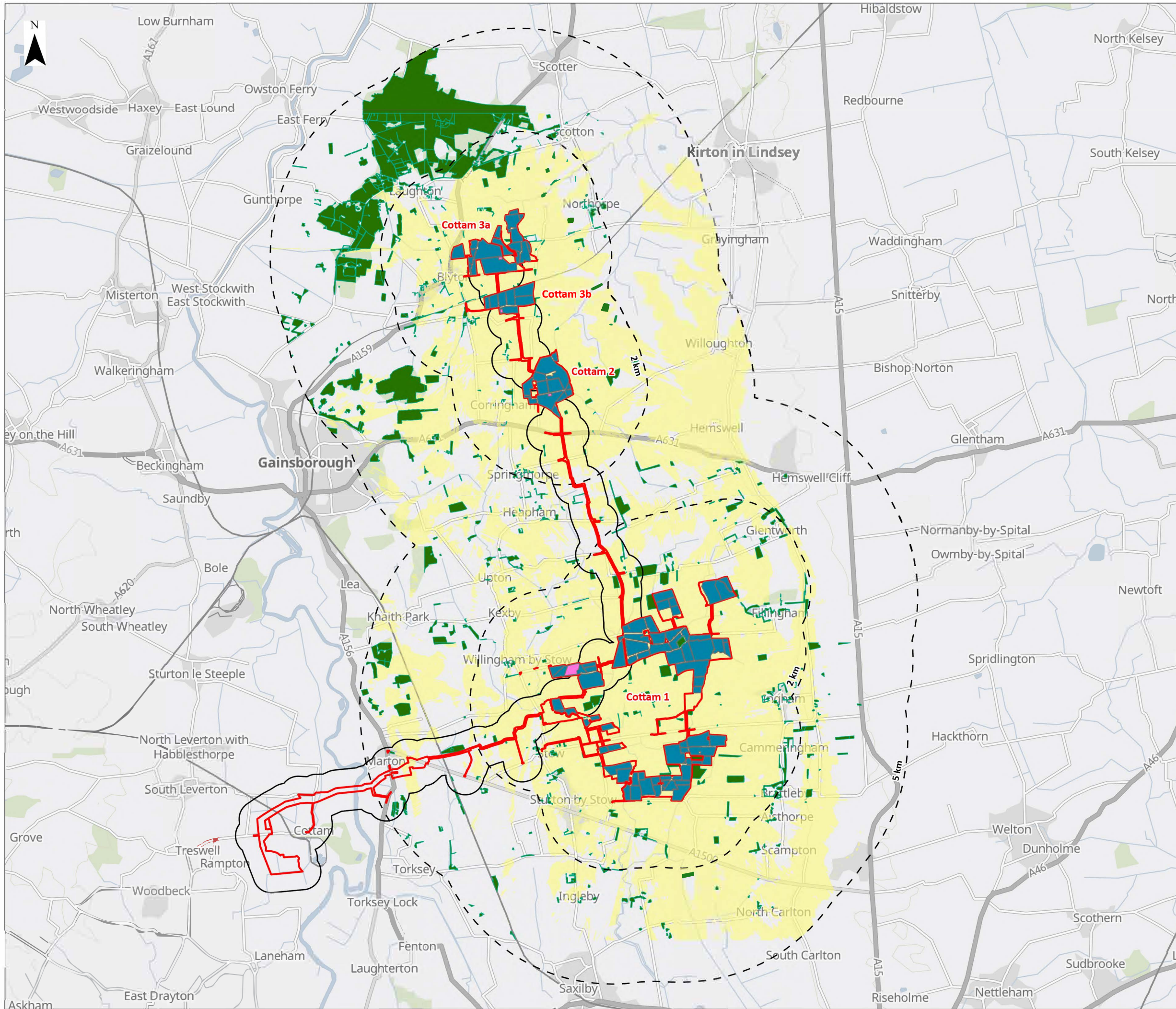
		Magnitude of Change				Significance of Effect			
		Construction	Operational		Decommissioning	Construction	Operational		Decommissioning
Visual Receptors	Sensitivity	Magnitude	Magnitude (Year 1)	Magnitude (Year 15)	Magnitude	Visual Effects	Visual Effects (after construction/ year 1). With 'primary' and 'secondary' mitigation.	Visual Effects (after Year 15). With 'primary' and 'secondary' mitigation.	Visual Effects With 'primary' and 'secondary' mitigation.
Transport Receptor: T074/Willingham Road Cottam 1 Assessment of Fixed panels	Medium	Medium Short Term	High Long Term	Medium Long Term	Low Short Term	Moderate Adverse Significant	Mod-Maj Adverse Significant	Moderate Neutral Significant	Minor Neutral Not Significant
Rationale/Conclusions/Discussion: The visual effects at this location (with the fixed panels compared to the tracker panels) will not alter the conclusions on significant effects. The value of the views along this route relate to this being a pleasant journey where the receptor can appreciate the wider arable landscape that is punctuated by woodland blocks and isolated oak trees. The landscape is intensively managed as arable use, but the hedgerows will have been allowed to grow out. The loss of attractive views towards the intensively managed landscape (that have been replaced with robust outgrown hedgerows) will still be the same with the fixed panels.									
Transport Receptor: T110/Blackthorn Lane Cottam 1 Assessment of Tracker panels	Medium	Medium Short Term	High Long Term	Medium Long Term	Low Short Term	Moderate Adverse Significant	Mod-Maj Adverse Significant	Moderate Neutral Significant	Minor Neutral Not Significant
Transport Receptor: T110/Blackthorn Lane Cottam 1 Assessment of Fixed panels	Medium	Medium Short Term	High Long Term	Medium Long Term	Low Short Term	Moderate Adverse Significant	Mod-Maj Adverse Significant	Moderate Neutral Significant	Minor Neutral Not Significant
Rationale/Conclusions/Discussion: The visual effects at this location (with the fixed panels compared to the tracker panels) will not alter the conclusions on significant effects. The value of the views relate to this being a journey through a very simple landscape where there are intensive levels or arable land use. The loss of attractive views towards the intensively managed landscape (that have been replaced with robust outgrown hedgerows) will still be the same with the fixed panels.									
Transport Receptor: T119/Fleets Lane Cottam 1 Assessment of Tracker panels	Medium	Medium Short Term	High Long Term	Medium Long Term	Low Short Term	Moderate Adverse Significant	Mod-Maj Adverse Significant	Moderate Neutral Significant	Minor Neutral Not Significant
Transport Receptor: T119/Fleets Laen Cottam 1 Assessment of Fixed panels	Medium	Medium Short Term	High Long Term	Medium Long Term	Low Short Term	Moderate Adverse Significant	Mod-Maj Adverse Significant	Moderate Neutral Significant	Minor Neutral Not Significant
Rationale/Conclusions/Discussion: The visual effects at this location (with the fixed panels compared to the tracker panels) will not alter the conclusions on significant effects. The value of the views relate to this being a journey through a landscape of regular geometric fields that is intensively managed and divided with few hedgerows or tree cover. The loss of attractive views towards the intensively managed landscape (that have been replaced with robust outgrown hedgerows) will still be the same with the fixed panels.									
Transport Receptor: T120/Unnamed Road, Stow Cottam 1 Assessment of Tracker panels	High-Med	Medium Short Term	High Long Term	Medium Long Term	Low Short Term	Mod-Maj Adverse Significant	Major Adverse Significant	Moderate-Major Neutral Significant	Minor Neutral Not Significant
Transport Receptor: T120/Unnamed Road, Stow Cottam 1 Assessment of Fixed panels	High-Med	Medium Short Term	High Long Term	Medium Long Term	Low Short Term	Mod-Maj Adverse Significant	Major Adverse Significant	Moderate-Major Neutral Significant	Minor Neutral Not Significant

		Magnitude of Change				Significance of Effect			
		Construction	Operational		Decommissioning	Construction	Operational		Decommissioning
Visual Receptors	Sensitivity	Magnitude	Magnitude (Year 1)	Magnitude (Year 15)	Magnitude	Visual Effects	Visual Effects (after construction/ year 1). With 'primary' and 'secondary' mitigation.	Visual Effects (after Year 15). With 'primary' and 'secondary' mitigation.	Visual Effects With 'primary' and 'secondary' mitigation.
Rationale/Conclusions/Discussion: The visual effects at this location (with the fixed panels compared to the tracker panels) will not alter the conclusions on significant effects. The value of the views relate to this being a journey through a simple landscape where the collection of small woodlands are the main features of interest. The loss of attractive views towards the intensively managed landscape (that have been replaced with robust outgrown hedgerows in some parts) will still be the same with the fixed panels.									
Transport Receptor: T122/Unnamed Road, Stow Cottam 1 Assessment of Tracker panels	Medium	Medium Short Term	High Long Term	Medium Long Term	Low Short Term	Moderate Adverse Significant	Mod-Maj Adverse Significant	Moderate Neutral Significant	Minor Neutral Not Significant
Transport Receptor: T122/Unnamed Road, Stow Cottam 1 Assessment of Fixed panels	Medium	Medium Short Term	High Long Term	Medium Long Term	Low Short Term	Moderate Adverse Significant	Mod-Maj Adverse Significant	Moderate Neutral Significant	Minor Neutral Not Significant
Rationale/Conclusions/Discussion: The visual effects at this location (with the fixed panels compared to the tracker panels) will not alter the conclusions on significant effects. The value of the views relate to this being a journey through a simple landscape where tree cover associated with the small collection of woodlands and Stow Lane is a feature on the horizon. The loss of attractive views towards these woodland within an intensively managed landscape (that have been replaced with robust outgrown hedgerows in some parts) will still be the same with the fixed panels.									
Transport Receptor: T127/Thorpe Lane Cottam 1 Assessment of Tracker panels	Medium	Medium Short Term	High Long Term	Medium Long Term	Low Short Term	Moderate Adverse Significant	Mod-Maj Adverse Significant	Moderate Neutral Significant	Minor Neutral Not Significant
Transport Receptor: T127/Thorpe Lane Cottam 1 Assessment of Fixed panels	Medium	Medium Short Term	High Long Term	Medium Long Term	Low Short Term	Moderate Adverse Significant	Mod-Maj Adverse Significant	Moderate Neutral Significant	Minor Neutral Not Significant
Rationale/Conclusions/Discussion: The visual effects at this location (with the fixed panels compared to the tracker panels) will not alter the conclusions on significant effects. The value of the views relate to this being a journey through a pleasant landscape with some elements and features of interest. There are also some areas of intensively farmed arable land, and so the route is influenced by this homogenous landscape. The loss of attractive views across this pleasant landscape that is intensively managed in parts (and that have been replaced with robust outgrown hedgerows in some parts) will still be the same with the fixed panels.									
Transport Receptor: T163/Mainline Railway Cottam 3b Assessment of Tracker panels	Med-High	Medium Short Term	High Long Term	Medium Long Term	Low Short Term	Mod-Maj Adverse Significant	Major Adverse Significant	Moderate-Major Neutral Significant	Minor Neutral Not Significant
Transport Receptor: T163/Mainline Railway Cottam 3b Assessment of Fixed panels	Med-High	Medium Short Term	High Long Term	Medium Long Term	Low Short Term	Mod-Maj Adverse Significant	Major Adverse Significant	Moderate-Major Neutral Significant	Minor Neutral Not Significant
Rationale/Conclusions/Discussion: The visual effects at this location (with the fixed panels compared to the tracker panels) will not alter the conclusions on significant effects. The value of the views along this route relate to it being a pleasant journey from Gainsborough to the coastal towns of Cleethorpes and Grimsby. This is a route where the appreciation of the view contributes to the quality and enjoyment of the journey and this will still be impeded in the same way as the fixed panels.									
PRoW Receptors									

		Magnitude of Change				Significance of Effect			
		Construction	Operational		Decommissioning	Construction	Operational		Decommissioning
Visual Receptors	Sensitivity	Magnitude	Magnitude (Year 1)	Magnitude (Year 15)	Magnitude	Visual Effects	Visual Effects (after construction/ year 1). With 'primary' and 'secondary' mitigation.	Visual Effects (after Year 15). With 'primary' and 'secondary' mitigation.	Visual Effects With 'primary' and 'secondary' mitigation.
PRoW Receptor: Fill 86 Cottam 1 Assessment of Tracker panels	High-Med	Medium Short Term	High Long Term	Medium Long Term	Low Short Term	Mod-Maj Adverse Significant	Major Adverse Significant	Moderate-Major Neutral Significant	Minor-Moderate Neutral Not Significant
PRoW Receptor: Fill 86 Cottam 1 Assessment of Fixed panels	High-Med	Medium Short Term	High Long Term	Medium Long Term	Low Short Term	Mod-Maj Adverse Significant	Major Adverse Significant	Moderate-Major Neutral Significant	Minor-Moderate Neutral Not Significant
Rationale/Conclusions/Discussion: The visual effects at this location (with the fixed panels compared to the tracker panels) will not alter the conclusions on significant effects. The value of the views along this route relates to this being a quiet location that captures an interesting collection of features such as the small collection of woodlands interspersed with isolated farmsteads. This is a route where the appreciation of the differing characteristics of the landscape contributes to the quality and enjoyment of the journey and this will still be impeded in the same way as the fixed panels.									
PRoW Receptor: Fill 767 Cottam 1 Assessment of Tracker panels	Med-High	Medium Short Term	Medium Long Term	Medium Long Term	Low Short Term	Mod-Maj Adverse Significant	Mod-Maj Adverse Significant	Moderate-Major Neutral Significant	Minor-Moderate Neutral Not Significant
PRoW Receptor: Fill 767 Cottam 1 Assessment of Fixed panels	Med-High	Medium Short Term	Medium Long Term	Medium Long Term	Low Short Term	Mod-Maj Adverse Significant	Mod-Maj Adverse Significant	Moderate-Major Neutral Significant	Minor-Moderate Neutral Not Significant
Rationale/Conclusions/Discussion: The visual effects at this location (with the fixed panels compared to the tracker panels) will not alter the conclusions on significant effects. The value of the views along this route relates to this being a quiet location that captures an interesting collection of features such as the small collection of woodlands interspersed with isolated farmsteads. This is a route where the appreciation of the differing characteristics of the landscape contributes to the quality and enjoyment of the journey and this will still be impeded in the same way as the fixed panels.									
PRoW Receptor: Pilh 20 Cottam 3a & 3b Assessment of Tracker panels	High	Medium Short Term	High Long Term	Medium Long Term	Low Short Term	Mod-Maj Adverse Significant	Major Adverse Significant	Mod-Maj Beneficial Significant	Minor Neutral Not Significant
PRoW Receptor: Pilh 20 Cottam 3a & 3b Assessment of Fixed panels	High	Medium Short Term	High Long Term	Medium Long Term	Low Short Term	Mod-Maj Adverse Significant	Major Adverse Significant	Mod-Maj Beneficial Significant	Minor Neutral Not Significant
Rationale/Conclusions/Discussion: The visual effects at this location (with the fixed panels compared to the tracker panels) will not alter the conclusions on significant effects. The value of the views along this route relates to this being a quiet location set away from the main settlement of Pilham within a strong framework of small and medium scale field systems. This is a route where the appreciation of isolation, enclosure and intimacy contributes to the quality and enjoyment of the journey and this will still be impeded in the same way as the fixed panels.									
PRoW Receptor: Stow 83 Cottam 1 Assessment of Tracker panels	High to Medium	Medium Short Term	High Long Term	Medium Long Term	Low Short Term	Mod-Maj Adverse Significant	Major Adverse Significant	Moderate-Major Neutral Significant	Minor Neutral Not Significant
ProW Receptor: Stow 83 Cottam 1 Assessment of Fixed panels	High to Medium	Medium Short Term	High Long Term	Medium Long Term	Low Short Term	Mod-Maj Adverse Significant	Major Adverse Significant	Moderate-Major Neutral Significant	Minor Neutral Not Significant

		Magnitude of Change				Significance of Effect			
		Construction	Operational		Decommissioning	Construction	Operational		Decommissioning
Visual Receptors	Sensitivity	Magnitude	Magnitude (Year 1)	Magnitude (Year 15)	Magnitude	Visual Effects	Visual Effects (after construction/ year 1). With 'primary' and 'secondary' mitigation.	Visual Effects (after Year 15). With 'primary' and 'secondary' mitigation.	Visual Effects With 'primary' and 'secondary' mitigation.
Rationale/Conclusions/Discussion: The visual effects at this location (with the fixed panels compared to the tracker panels) will not alter the conclusions on significant effects. The value of the views along this route relates to this being a quiet location set away from the main east west routes within a strong framework of small and medium scale field systems. This is a route where the appreciation of the open arable fields, plantation woodlands, and intimacy and enclosure contributes to the quality and enjoyment of the journey and this will still be impeded in the same way as the fixed panels.									
PRoW Receptor: TLFe 31 Cottam 1 Assessment of Tracker panels	High to Medium	Medium Short Term	High Long Term	Medium Long Term	Low Short Term	Mod-Maj Adverse Significant	Major Adverse Significant	Moderate-Major Neutral Significant	Minor Neutral Not Significant
PRoW Receptor: TLFe 31 Cottam 1 Assessment of Fixed panels	High to Medium	Medium Short Term	High Long Term	Medium Long Term	Low Short Term	Mod-Maj Adverse Significant	Major Adverse Significant	Moderate-Major Neutral Significant	Minor Neutral Not Significant
Rationale/Conclusions/Discussion: The visual effects at this location (with the fixed panels compared to the tracker panels) will not alter the conclusions on significant effects. The value of the views along this route relates to this being a quiet location where the landscape is balanced and pleasant with some interesting features. This is a route where the appreciation of the small plantation woodlands, and where enclosure contrasts with the open parts and this contributes to the quality and enjoyment of the journey and this will still be impeded in the same way as the fixed panels.									

Appendix A - Zones of Theoretical Visibility



Key

- Order Limits
- Study Area
- 500m Cable Corridor Study Area
- Woodland
- Solar panel area
- Substation area

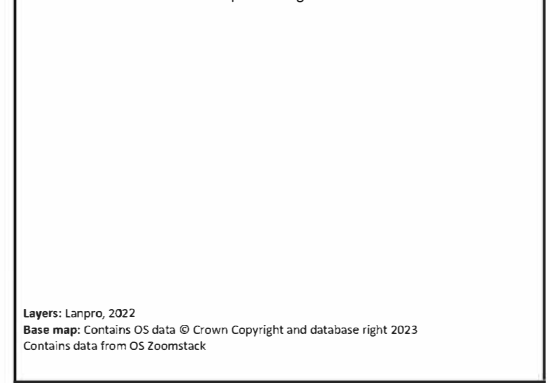
Augmented Zone of Theoretical Visibility (ZTV)

- Fixed solar panels theoretically visible

Note:

1. The augmented Zone of Theoretical Visibility (ZTV) was produced using a combination of the Environment Agency's Composite 2m DSM (2020) LiDAR Data (which includes screening features such as buildings) as well as tree and hedgerow data. The resulting ZTV demonstrates where the development may be visible from, when considering existing screening elements such as buildings from the DSM, as well as trees (modelled at 12m high) and hedgerows (modelled at 2m high).
2. This ZTV was produced with the assumption that proposed solar panels would fill the full extent of the allocated parameters boundary which considers a variety of offsets and buffers from existing landscape features such as trees, hedgerows and ditches. The ZTV assumes a maximum fixed panel height of 3.5m.

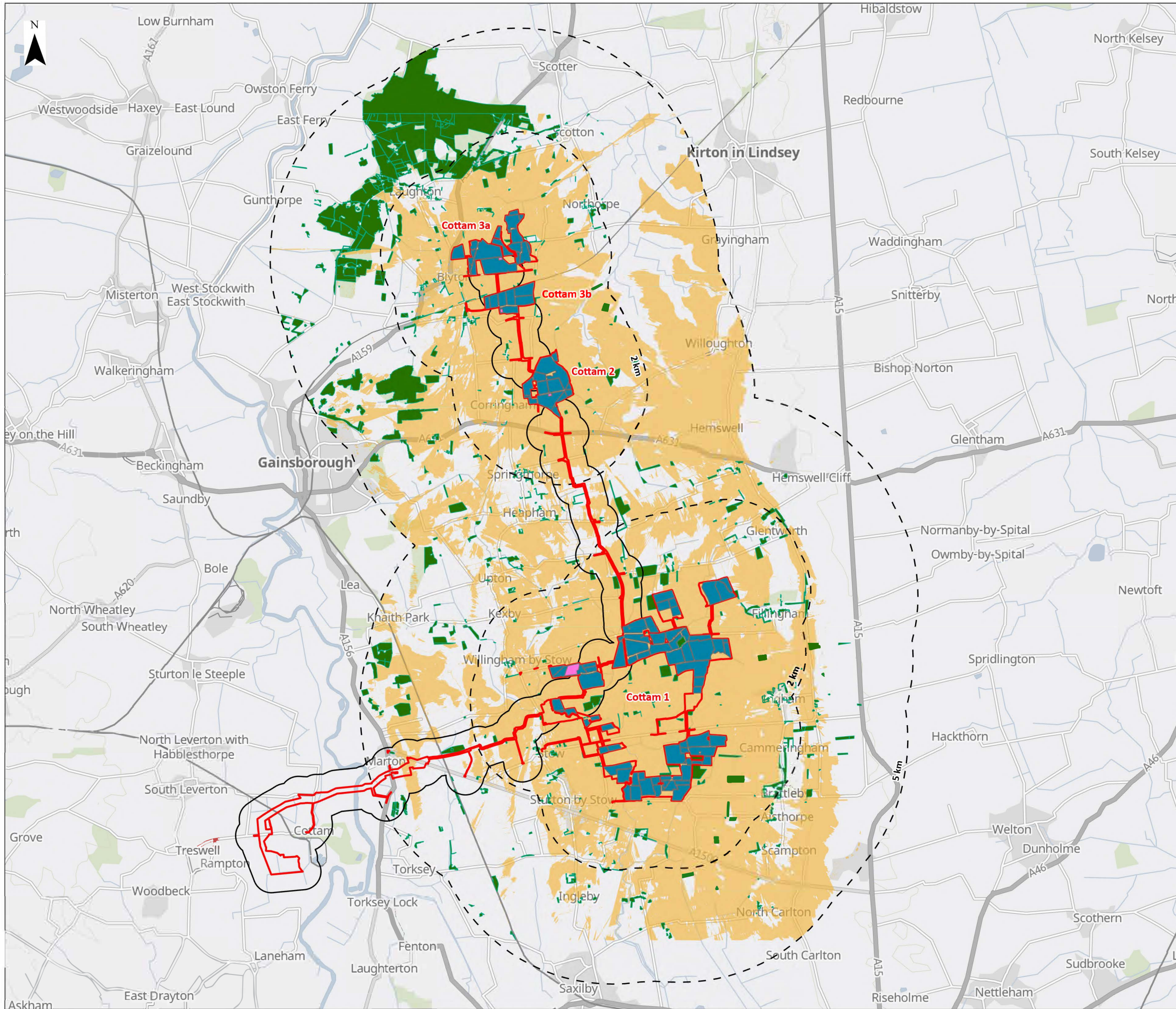
Layers: Lanpro, 2022
Base map: Contains OS data © Crown Copyright and database right 2023
Contains data from OS Zoomstack



Ref: P2981_LPR_ZZ_ON_DR_Z_0288	
Drawn by: BH	Checked by: MT

**Cottam 1, 2, 3a and 3b
Augmented ZTV - Fixed Solar Panels**

COTTAM SOLAR PROJECT
Landscape and Visual Impact Assessment
Environmental Statement (ES)



Key

- Order Limits
- Study Area
- 500m Cable Corridor Study Area
- Woodland
- Solar panel area
- Substation area

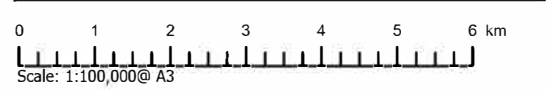
Augmented Zone of Theoretical Visibility (ZTV)

- Tracker solar panels theoretically visible

Note:

1. The augmented Zone of Theoretical Visibility (ZTV) was produced using a combination of the Environment Agency's Composite 2m DSM (2020) LiDAR Data (which includes screening features such as buildings) as well as tree and hedgerow data. The resulting ZTV demonstrates where the development may be visible from, when considering existing screening elements such as buildings from the DSM, as well as trees (modelled at 12m high) and hedgerows (modelled at 2m high).
2. This ZTV was produced with the assumption that proposed solar panels would fill the full extent of the allocated parameters boundary which considers a variety of offsets and buffers from existing landscape features such as trees, hedgerows and ditches. The ZTV assumes a maximum tracker panel height of 4.5m.

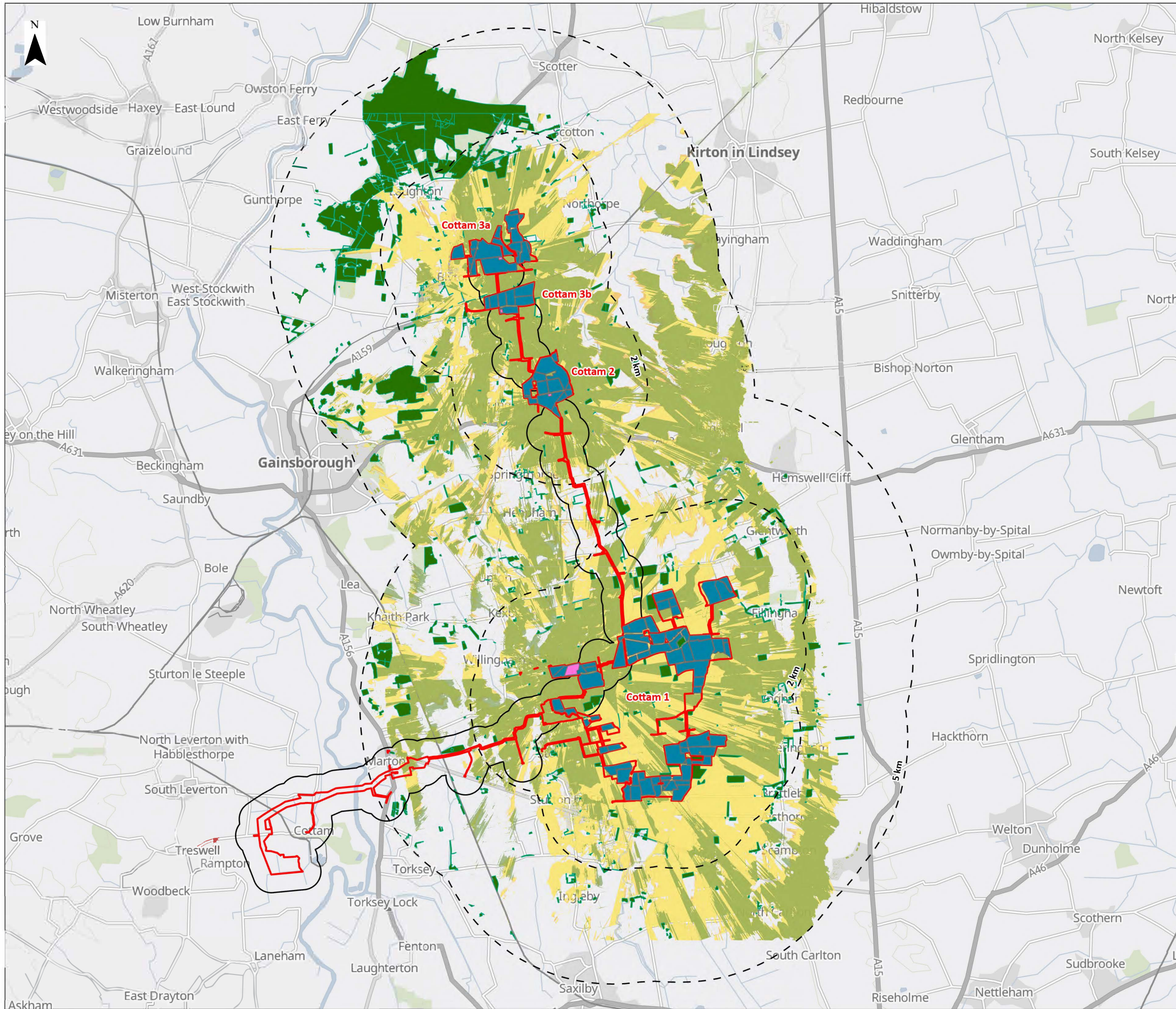
Layers: Lanpro, 2022
Base map: Contains OS data © Crown Copyright and database right 2023
Contains data from OS Zoomstack



Ref: P2981_LPR_ZZ_ON_DR_Z_0289	
Drawn by: BH	Checked by: MT

Cottam 1, 2, 3a and 3b
Augmented ZTV - Tracker Solar Panels

COTTAM SOLAR PROJECT
Landscape and Visual Impact Assessment
Environmental Statement (ES)



Key

- Order Limits
- Study Area
- 500m Cable Corridor Study Area
- Woodland
- Solar panel area
- Substation area

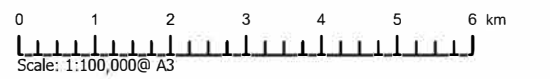
Augmented Zone of Theoretical Visibility (ZTV)

- Substation theoretically visible
- Fixed solar panels theoretically visible
- Tracker solar panels theoretically visible

Note:

- The augmented Zone of Theoretical Visibility (ZTV) was produced using a combination of the Environment Agency's Composite 2m DSM (2020) LiDAR Data (which includes screening features such as buildings) as well as tree and hedgerow data. The resulting ZTV demonstrates where the development may be visible from, when considering existing screening elements such as buildings from the DSM, as well as trees (modelled at 12m high) and hedgerows (modelled at 2m high).
- This ZTV was produced with the assumption that proposed solar panels would fill the full extent of the allocated parameters boundary which considers a variety of offsets and buffers from existing landscape features such as trees, hedgerows and ditches. The ZTV assumes a maximum fixed panel height of 3.5m, a maximum tracker panel height of 4.5m and a Substation height of 13.2m at Cottam 1 and 6.5m at Cottam 2, 3a and 3b.

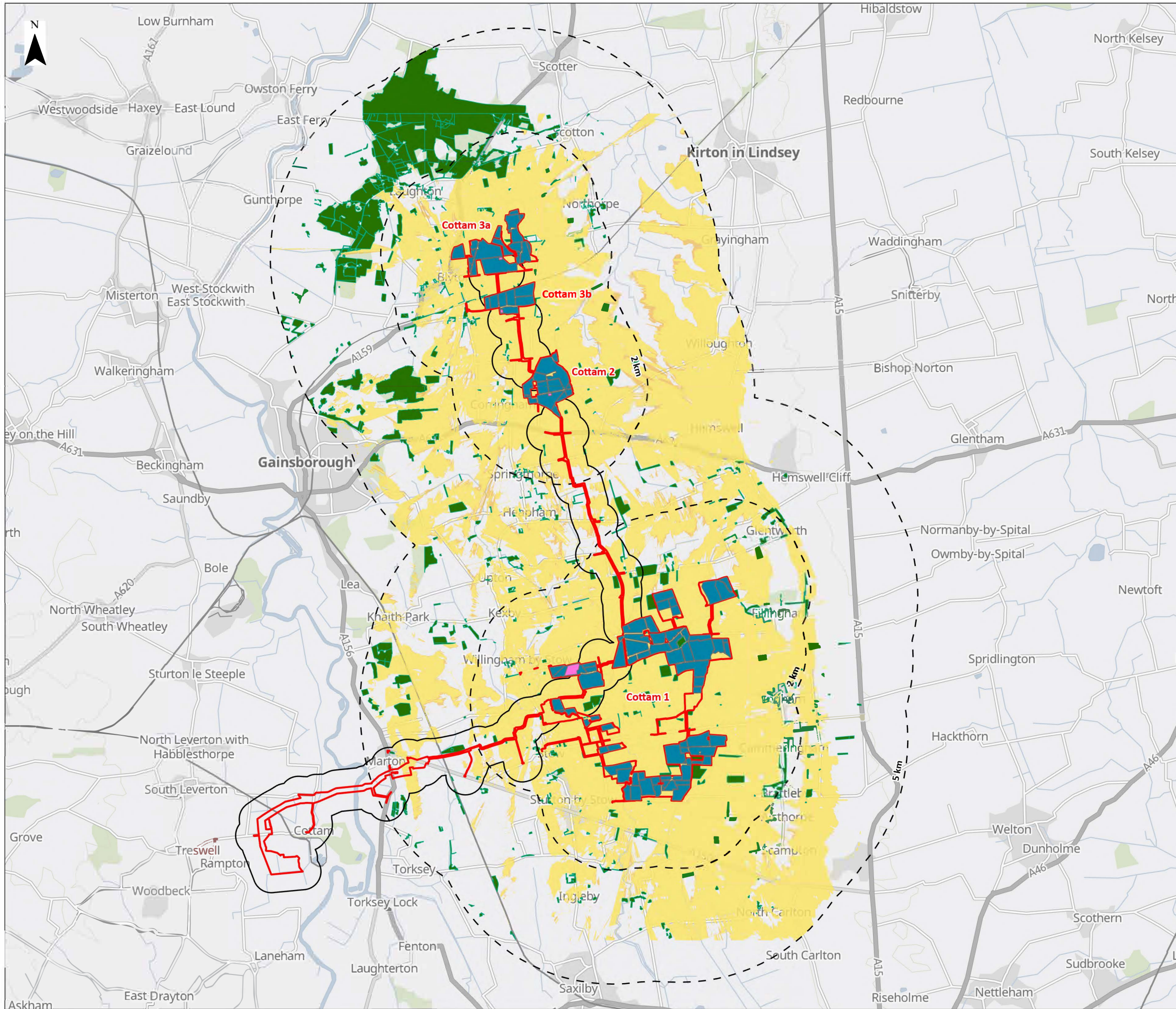
Layers: Lanpro, 2022
Base map: Contains OS data © Crown Copyright and database right 2023
Contains data from OS Zoomstack



Ref: P2981_LPR_ZZ_ON_DR_Z_0287	
Drawn by: BH	Checked by: MT

Cottam 1, 2, 3a and 3b
Augmented ZTV - Fixed and Tracker Solar Panels

COTTAM SOLAR PROJECT
Landscape and Visual Impact Assessment
Environmental Statement (ES)



Key

- Order Limits
- Study Area
- 500m Cable Corridor Study Area
- Woodland
- Solar panel area
- Substation area

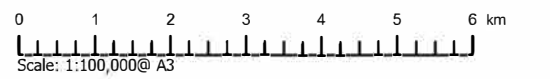
Augmented Zone of Theoretical Visibility (ZTV)

- Fixed solar panels theoretically visible
- Tracker solar panels theoretically visible

Note:

1. The augmented Zone of Theoretical Visibility (ZTV) was produced using a combination of the Environment Agency's Composite 2m DSM (2020) LiDAR Data (which includes screening features such as buildings) as well as tree and hedgerow data. The resulting ZTV demonstrates where the development may be visible from, when considering existing screening elements such as buildings from the DSM, as well as trees (modelled at 12m high) and hedgerows (modelled at 2m high).
2. This ZTV was produced with the assumption that proposed solar panels would fill the full extent of the allocated parameters boundary which considers a variety of offsets and buffers from existing landscape features such as trees, hedgerows and ditches. The ZTV assumes a maximum fixed panel height of 3.5m, a maximum tracker panel height of 4.5m.

Layers: Lanpro, 2022
Base map: Contains OS data © Crown Copyright and database right 2023
Contains data from OS Zoomstack



Ref: P2981_LPR_ZZ_ON_DR_Z_0290	
Drawn by: BH	Checked by: MT

Cottam 1, 2, 3a and 3b
Augmented ZTV - Fixed and Tracker Solar Panels

COTTAM SOLAR PROJECT
Landscape and Visual Impact Assessment
Environmental Statement (ES)